



Clinical Rotator Model 341 Catalog No. 14-252



The Model 341 Clinical Rotator is an economical, single-speed (100 rpm) unit which matches the rotational requirements of the Fisher Reagent Screen Test Kit (Cat. No. 2300-76)-a macroscopic card test for syphilis. A large 8 x 10.5 inch rubber-matted platform provides positive gripping of up to four standard (5 x 3.75) test cards. An integral timer permits setting of sample rotation times of up to 15 minutes. A loud bell signals when the timed operation finishes. If desired, the supplied lightweight plastic cover may be used to add moisture to the rotating samples – in effect, functioning as a self-contained humidity chamber. The cover contains a high-absorbent, polyurethane insert for this purpose. Prior to operation, water may be added to the foam to obtain the benefits of moisture.

Permanently oiled motor bearings and heavy-gauge construction assures long life under normal laboratory conditions

Unpacking

The clinical Rotator is shipped in a single carton. Unpack the contents and check the items received against the packing list below. Should a shortage exist, notify your Fisher branch or representative (refer to the name and number given for identification purposes).

NOTE: If shipping damage is observed, retain all items along with the carton and packing material, and immediately file a claim with the final

carrier.

Qty.	Item	Part No.
1	Clinical Rotator	45987
1	Instructions	46014
1	Warranty Card	01001

Performance Characteristics

Rotational Speed	100 \pm 2 RPM
Timer Range	0 to 15 minutes \pm 10%

Specifications

Power requirements	
Voltage	115 VAC
Frequency	60 Hz
Current	0.026 A
Platform Size	8 x 10.5 inches

Operation

The clinical rotor has a convenient 6-foot long power cord for connection to a standard 115V 60Hz, grounded power outlet. Select an installation location that is flat and level to assure a specified performance and long life of the drive mechanism. There is no need to check the rotational speed, since the motor is of the synchronous type (synchronous with line frequency), and will stop completely if it should ever become defective.

CAUTION: Never use the rotator for anything other than its intended purpose. Loads in excess of diagnostic cards could strip the drive gears. That is, do not use the rotator as a mixing apparatus, although it can handle loads not exceeding one pound.

1. Plug the rotator into any convenient 115V 60Hz power outlet. Check that the guide pin for the rubber-matted platform is engaged in the rotor hole (Figure 1).



Figure 1. Platform Guide Pin Engagement

2. Place up to four 5 x 3.75 diagnostic cards (figure 2) on the rubber-matted platform.

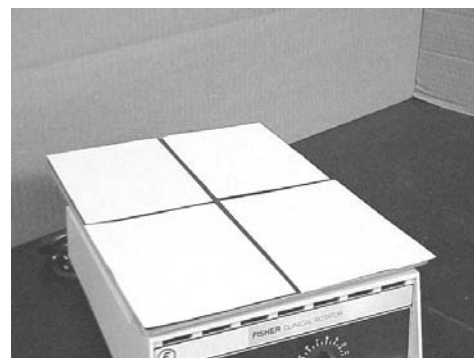


Figure 2. Positioning Diagnostic Cards

3. If desired, the supplied cover may be used to add moisture to the samples during rotation. Simply add water (several ounces) to the highly absorbent, polyurethane insert provided with the cover.
4. The timer control (Figure 3) also functions as the on-off control for the rotator. Turn the timer control clockwise to operate the rotator and to set the desired rotation time in minutes (timer calibrated in minutes). While in operation, the timer control is driven counterclockwise, showing the remaining operation time. At zero time (OFF), the rotator is shut off and a bell is sounded. The timer control may be manually turned to zero (or OFF) or any other time setting during an operation.

CAUTION: Do not turn the timer counterclockwise from the OFF position. This will strip the knob on the timer shaft.

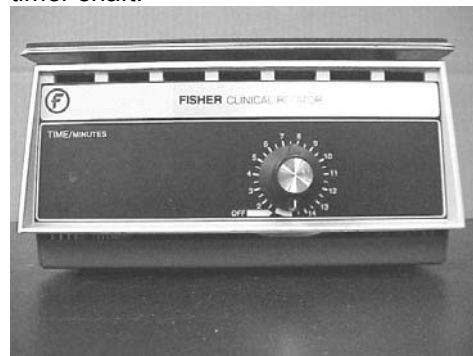


Figure 3. Using the Timer Control

Maintenance

Maintenance on an operator's level is limited to general exterior upkeep of the unit and re-calibration of the control knob. Fisher maintains fully-staffed service centers at all major Fisher branches to assist with any service problems.

Control Knob Calibration

Should the control knob become loose on its shaft, loosen (0.05 hex) both set screws (Figure 4) sufficiently to freely rotate the knob. With the timer off, set the knob pointer to the right-hand edge of the OFF black area. Retighten the two set screws.

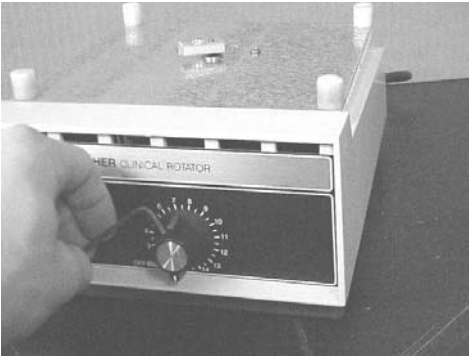


Figure 4. Calibrating Timer Control

Replacement Parts

A complete replacement part listing follows, including parts locations figures for all listed items. Special points of maintenance are shown in Figures 5 and 6.



Replace Rotor if uneven wearing is present, do not lubricate; check for tightness on shaft

Figure 5. Rotor

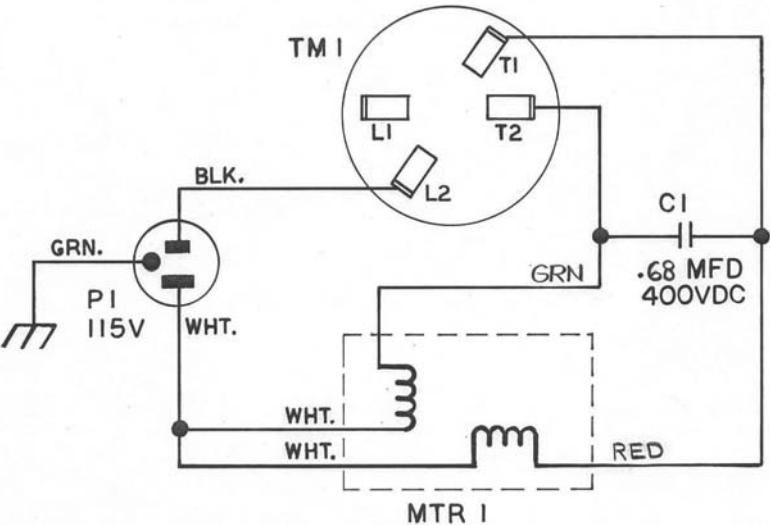


Figure 6. Internal Wiring

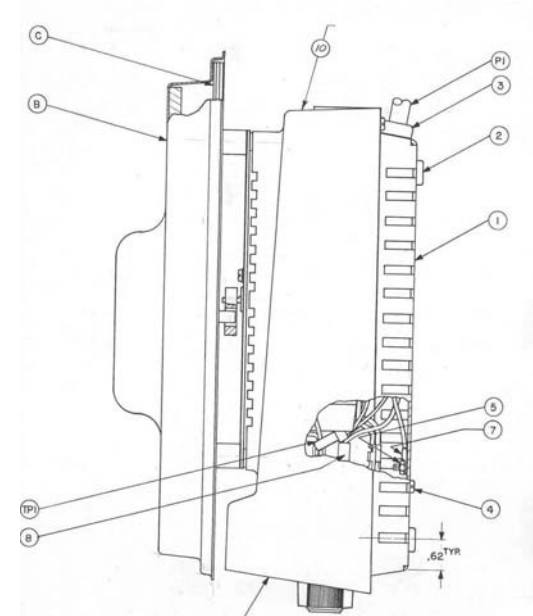
Replacement Parts

Item	Part No.	Item ID
Clinical Rotator Model 341 Main Assembly	45987	
Clinical Rotator Assembly		
Base	44787	1
Pad	27633	2
Bushing	38945	3
Screw, Tap 6-32 x 3/8	15362	4
Nut, Hex 6-32	14992	5
Non-Insulated Support	44934	7
Ring Terminal		
Insulated Receptacle	03325	8
Insulated Splice	15276	TB1
Line Cord	06643	P1
Housing Assembly See separate listing	45999	A
Cover Assembly See separate listing	45986	B
Rotator Surface Assembly See separate listing	45977	C

A Housing Assembly Figure 10		
Housing Assembly	45999	A
Consisting of:		
Housing	45978	1
Front Panel	45973	2
Timer	45984	TM1
Synchronous Motor	45983	MTR1
Capacitor, Paper, 0.22µF, 400VDC	38495	C1
Spacer	45982	3
Mounting Plate	45979	4
Rotor	45980	5
Data Plate	46000	6
Screw, Cap Soc Hd, 8-32x1.25	46001	7
Set Screw, Soc Hd, 4-40x3/16	15811	8
Screw, Ma Pan Hd, 6-32	15360	9
Hex Nut, 8-32	15627	10
Washer, Ext Lock	14124	11
Spring, #8		
Washer, Int Lock	14053	12
Spring, #6		
Non-Insul Recept & Tab Comb.	43428	13
Insulated Faston Term	03325	14
PVC Sleeve, 20 Ga, PVC-105-20	14747	15
Knob, Blk, Skirted Bar	38661	16
B Cover Assembly, Figure 11		
Cover Assembly,	45986	B
Consisting of:		
Cover	45972	1
Damping Foam	46007	2
C Rotator Surface Assembly, Figure 12		
Rotator Surface Assembly, Consisting of:	45977	C
Rotator Surface	45974	1
Guide Pin	45981	2
Cement, Eastman 910	14333	3
Rotator Base Assembly	45988	A



Schematic Diagram



Clinical Rotator Assembly, Parts Location

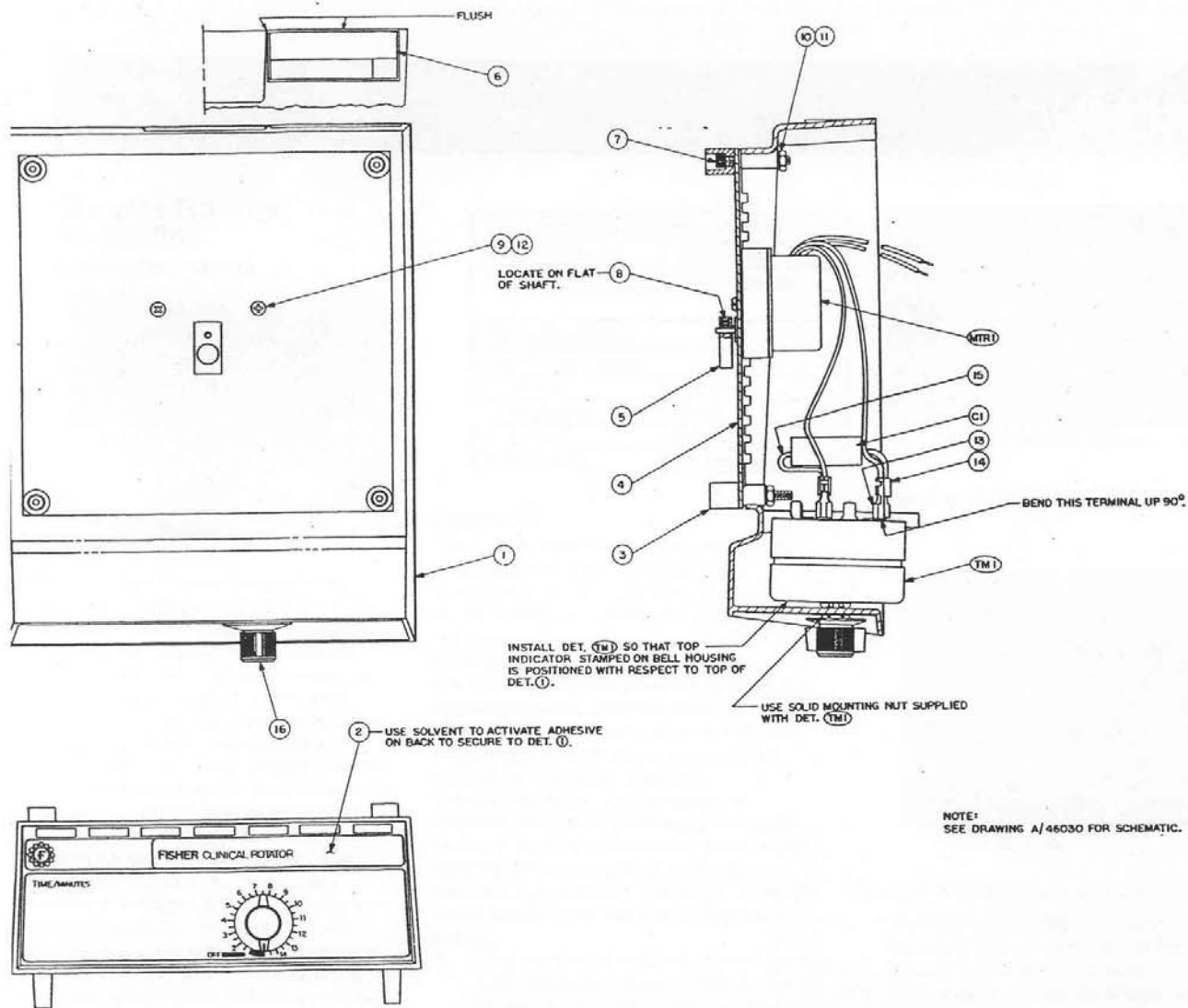


Figure 10, Housing Assembly, Parts Location D45999

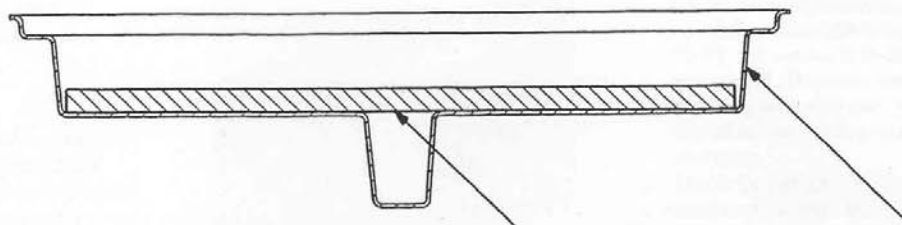


Figure 11, Cover Assembly, Parts Location C45986

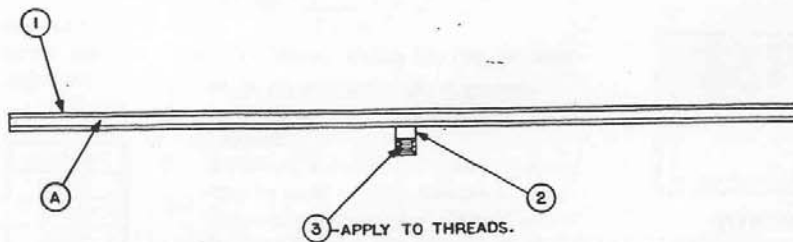


Figure 12, Rotator Surface Assembly, Parts Location B45977

