



6.1 GP1Pro / Plus Ventilated Spare Parts

Sorvall:

Sorvall X1 Pro,
Sorvall ST1 Plus

Thermo Scientific:

SL1 Plus
Multifuge X1 Pro
Megafuge ST1 Plus

ThermoFisher
SCIENTIFIC



ThermoFisher
SCIENTIFIC
The world leader in serving science



Overview

- [Front Panel](#)

[Parts List & Tools for Disassembly](#)

- [Lid](#)

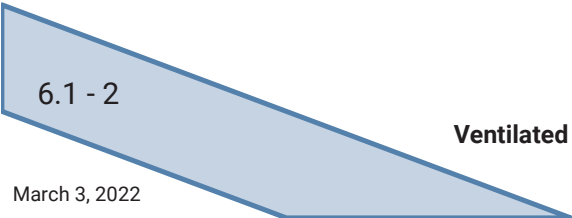
[Parts List & Tools for Disassembly](#)

- [Electronics](#)

[Parts List & Tools for Disassembly](#)

- [Service Kits and Sticker](#)

[Parts List & Tools for Disassembly](#)



6.1 - 2

Ventilated Units: Multifuge X1 – Series / Megafuge 16 – series / Legend X1 – series / ST16 – series / SL16 - series

March 3, 2022

ThermoFisher
S C I E N T I F I C

Centrifuges Overview

- Megafuge ST1 Plus
- Sorvall ST1 Plus
- Thermo Scientific SL1 Plus



- Multifuge X1 Pro
- Sorvall X1 Pro



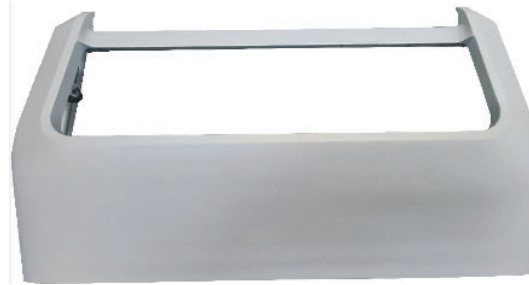
6.1 - 3

Ventilated Units: Multifuge X1 – Series / Megafuge ST1 – series / Sorvall X1 – series / ST1 – series / SL1 - series

March 3, 2022

ThermoFisher
SCIENTIFIC

Front Panel



[Pos. 1000](#)



[Pos. 1050](#)



[Pos. 1060](#)



[Pos. 1070](#)



[Pos. 1300](#)

[Pos. 1310](#)



[Pos. 1400](#)



[Pos. 1110](#)

[Pos. 1120](#)

[Pos. 1130](#)



[Pos. 1500](#)



[Pos. 1510](#)



[Pos. 1200](#)

[Pos. 1210](#)

6.1 - 4

Ventilated Units: Multifuge X1 – Series / Megafuge ST1 – series / Sorvall X1 – series / ST1 – series / SL1 - series

March 3, 2022

ThermoFisher
SCIENTIFIC

Spare Parts Front Panel

Pos.	Part Nr.:	Description:	Multifuge X1	Megafuge ST1	Sorvall X1	Sorvall ST1	TS SL 1	Required Tools	Additional Recommended Tools
1000	50155331	Front Panel (complete, incl. Pos. 1050, 1060, 1070)	X	X	X	X	X	TX25	
1050	20480320	Screw for plastic parts	X	X	X	X	X	TX 30	TX 25
1060	20480317	Washer	X	X	X	X			
1070	20290706	O-Ring	X	X	X	X			
1110	50157294	Keypad Overlay Megafuge ST1		X				TX25	
1120	50157306	Keypad Overlay Sorvall ST 1				X			
1130	50157308	Keypad Overlay SL 1					X		
1200	50157318	GUI gelasert, Multifuge Pro GP1	X						
1210	50157317	GUI gelasert, Sorvall X Pro GP1			X				
1300	50160872	Adapter for UI GP1 Pro		X		X	X	TX25	
1310	50157569	Bezel GUI GP1		X		X	X		
1400	20150380	Display SUI GP Plus		X		X	X	TX15	TX25
1500	50150955	Clamp Ferrite round	X	X	X	X	X		TX25
1510	20059877	USB Cover	X		X				

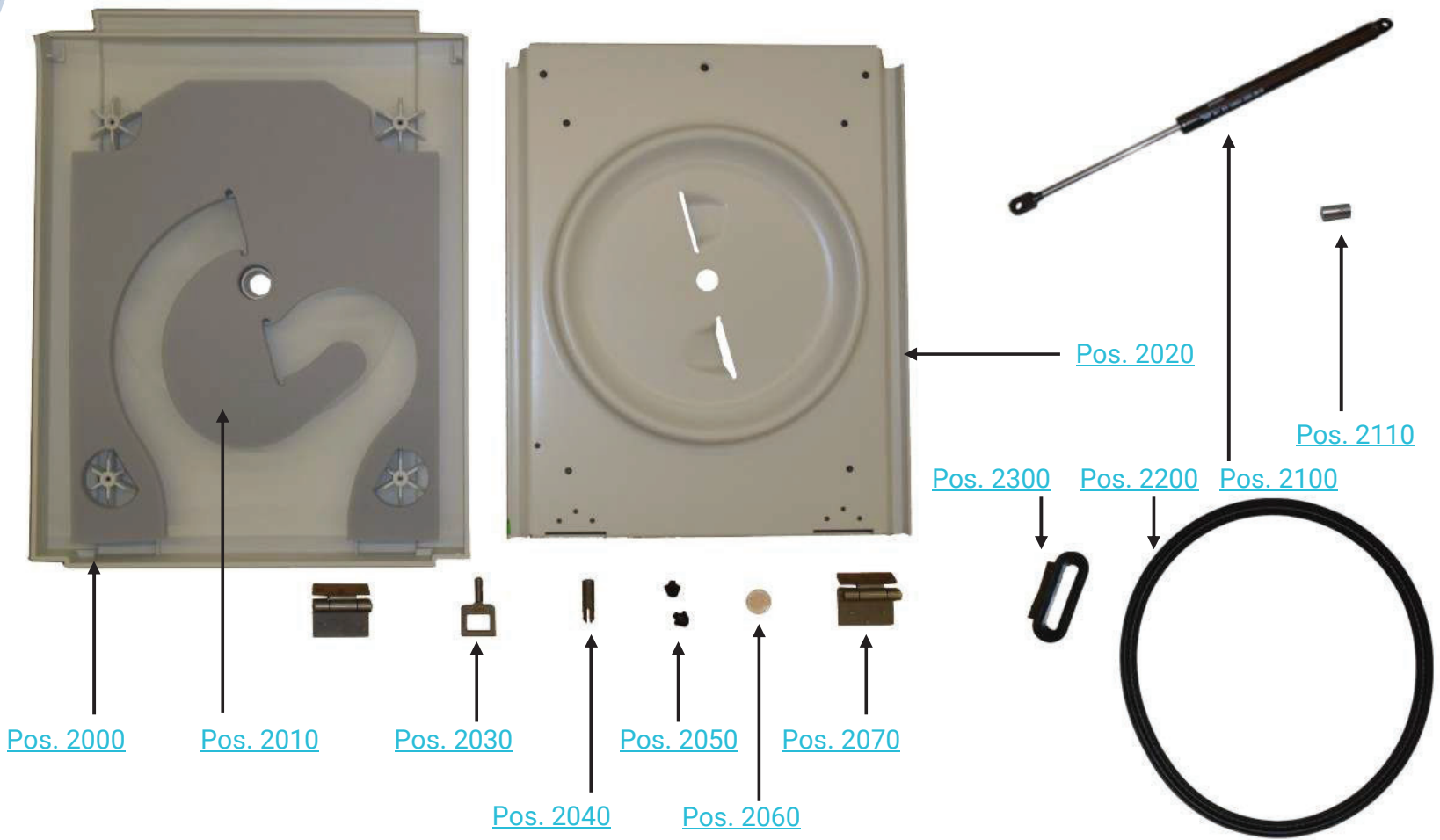
6.1 - 5

Ventilated Units: Multifuge X1 – Series / Megafuge ST1 – series / Sorvall X1 – series / ST1 – series / SL1 - series

March 3, 2022

ThermoFisher
SCIENTIFIC

Lid



6.1 - 6

Ventilated Units: Multifuge X1 – Series / Megafuge ST1 – series / Sorvall X1 – series / ST1 – series / SL1 - series

March 3, 2022

ThermoFisher
SCIENTIFIC

Spare Parts Lid

Pos.	Part Nr.:	Description:	Multifuge X1	Megafuge ST1	Sorvall X1	Sorvall ST1	TS SL 1	Required Tools	Additional Recommended Tools
2000	20058438	Lid upper cover	X	X	X	X	X	4mm Allen, TX 30	
2010	20058443	Foam	X	X	X	X	X	TX 30	4mm Allen
2020	50155565	Lower Cover	X	X	X	X	X	TX 30	
2030	20058480	Hook	X	X	X	X	X	17mm jaw wrench, pipe wrench	TX 30
2040	50135798	Mounting bracket	X	X	X	X	X		
2060	20050543	Window	X	X	X	X	X		
2070	20058440	Hinge	X	X	X	X	X	4mm Allen	
2200	20058632	Gasket	X	X	X	X	X		
2300	20058491	Gas spring grommet	X	X	X	X	X		
2100	50154682	Gas lid stay 220N	X	X	X	X	X	Striker pin, hammer, pipe wrench	
2110	50161877	Pin notch	X	X	X	X	X	Striker pin, hammer	
	50161878	SL-Sicherung D6	X	X	X	X	X		

6.1 - 7

Ventilated Units: Multifuge X1 – Series / Megafuge ST1 – series / Sorvall X1 – series / ST1 – series / SL1 - series

March 3, 2022

ThermoFisher
SCIENTIFIC

Electronics I



[Pos. 3700](#)

[Pos. 3000](#)

[Pos. 3040](#)



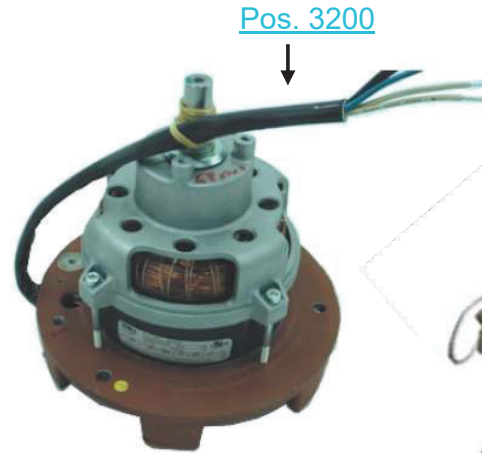
[Pos. 3030](#)



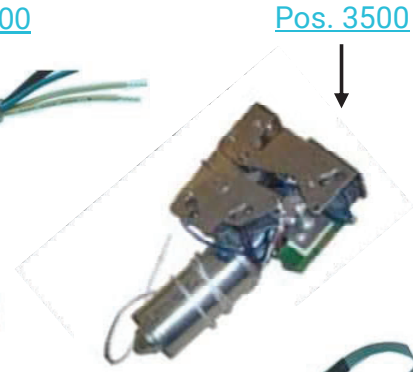
[Pos. 3020](#)



[Pos. 3010](#)



[Pos. 3200](#)



[Pos. 3500](#)



[Pos. 3400](#)



[Pos. 3110](#)



[Pos. 3410](#)



Always use the dedicated power cable.

6.1 - 8

Ventilated Units: Multifuge X1 – Series / Megafuge ST1 – series / Sorvall X1 – series / ST1 – series / SL1 - series

March 3, 2022

ThermoFisher
SCIENTIFIC

Electronics II

[Pos. 3630](#)



[Pos. 3640](#)



[Pos. 3650](#)



[Pos. 3710](#)



[Pos. 3720](#)



[Pos. 3730](#)

[Pos. 3610](#)



[Pos. 3620](#)

6.1 - 9

Ventilated Units: Multifuge X1 – Series / Megafuge ST1 – series / Sorvall X1 – series / ST1 – series / SL1 - series

March 3, 2022

ThermoFisher
SCIENTIFIC

Spare Parts Electronics

Pos.	Part Nr.:	Description:	230V	120V	Required Tools	Additional Recommended Tools
3000	20150355	Main PCB	X	X	TX 25	
3010	50161192	Fan	X			
3020	20180745	Panel Plug 120V / 230V 10A	X	X	Small scremdriver	
3030	20180747	Overcurrent Switch	X	X	Small screwdriver	4mm Allen
3040	20160746	Break Resistor 120Ω	X	X		4mm Allen
3100	70902026	AutoLock	X	X	3mm Allen	AutoLock Tool Kit
3200	50156884	Motor GP	X	X	13mm socket wrench	AutoLock Tool kit, 4mm Allen
3400	20150470	Sensor Cap	X	X	TX 25	
3410	20058551	Motor Cover	X	X		
3500	70902710	Lid Latch	X	X	TX 25	
3610	20190300	Line in cord 120V		X		
3620	20190246	Line in cord 230V	X			
3630	50159974	Latch wire	X	X		TX 25
3640	50159980	Keypad Overlay wire	X	X		
3650	50159981	GUI wire	X	X		
3710	50159979	Plug for rear panel	X	X		
3720	50149033	Modular Coupling (RJ45)	X	X		Small screwdriver
3730	20220629	Cap	X	X		Small screwdriver

6.1 - 10

Ventilated Units: Multifuge X1 – Series / Megafuge ST1 – series / Sorvall X1 – series / ST1 – series / SL1 - series

March 3, 2022

ThermoFisher
SCIENTIFIC

Spare Parts NV-RAM

Pos.	Part Nr.:	Description:	230V	120V	100V	Required Tools	Additional Recommended Tools
3700	70907378	NVRAM PRV GP1 Plus			X	Chip removal tool or small screwdriver	TX 25
	70907368	NVRAM PRV GP1 Plus		X			
	70907366	NVRAM PRV GP1 Plus	X				
USB	70907376	NVRAM PRV GP1 Pro			X		
	70907364	NVRAM PRV GP1 Pro		X			
	70907362	NVRAM PRV GP1 Pro	X				

6.1 - 11

Ventilated Units: Multifuge X1 – Series / Megafuge ST1 – series / Sorvall X1 – series / ST1 – series / SL1 - series

March 3, 2022

Service Kits and Sticker



[Pos. 4100](#)



[Pos. 4000](#)



[Pos. 4290](#)



[Pos. 4200](#)



[Pos. 4210](#)



[Pos. 4220](#)



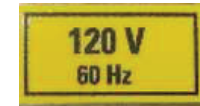
[Pos. 4230](#)



[Pos. 4240](#)



[Pos. 4250](#)



[Pos. 4260](#)



[Pos. 4270](#)



[Pos. 4280](#)

Spare Parts Service Kits and Sticker

Pos.	Part Nr.:	Description:	PRO GP1	PLUS GP1
4000	70900100	PM-Kit GP4 Pro/Plus	X	X
4100	70904693	TOOL KIT AUTOLOCK	X	X
4200	20310530	Label Biohazard	X	X
4210	50151010	Sticker Disconnect from mains	X	X
4220	50150990	Sticker Read Manual	X	X
4230	20310307	Sticker Attention	X	X
4240	10100218	Sticker Grounding	X	X
4250	50136700	Adhesive label AutoLock	X	X
4260	20055681	Label 120V	X	X
4270	20055682	Label 230V	X	X
4280	20055680	Label 100V	X	X
4290	Call Service	Name plate	X	X

6.1 - 13

Ventilated Units: Multifuge X1 – Series / Megafuge ST1 – series / Sorvall X1 – series / ST1 – series / SL1 - series

March 3, 2022

