

## DXRxi Spectrum has spiked peaks not Gaussian Shaped peaks

Figure 1 is of a polystyrene spectrum collected in OMNICxi software where the EM gain setting was set to On in the OMNICxi Acquisition screen.

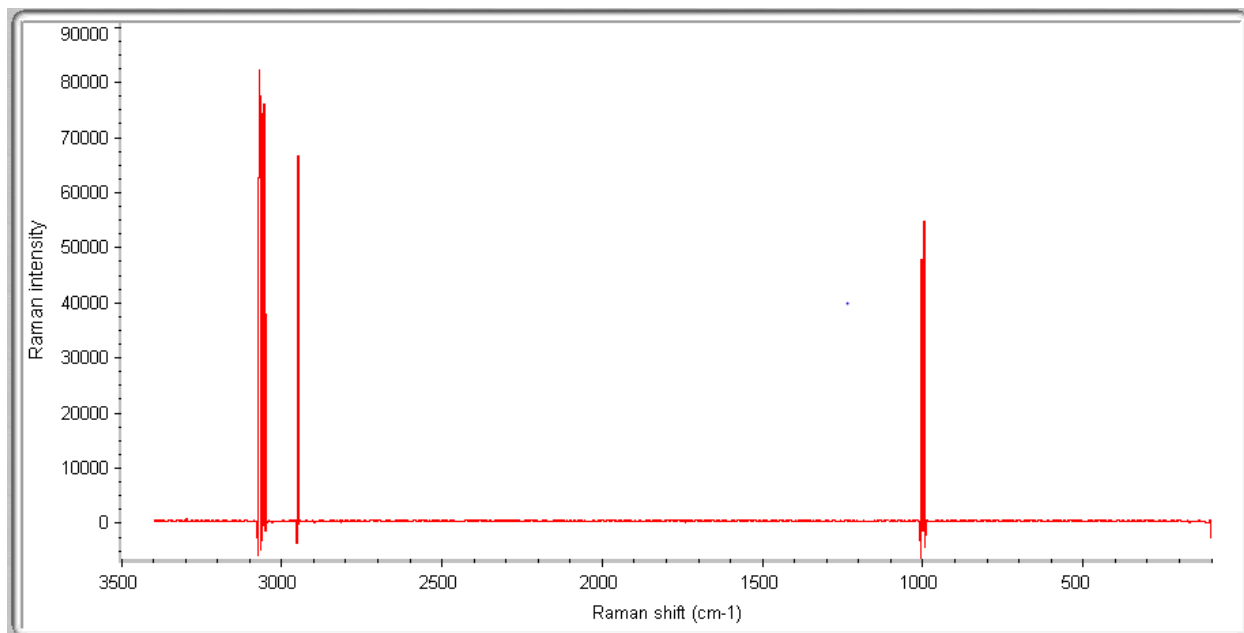


Figure 1

Figure 2 shows the polystyrene spectrum with the setting set to Off. In this case you get the expected spectrum for polystyrene.

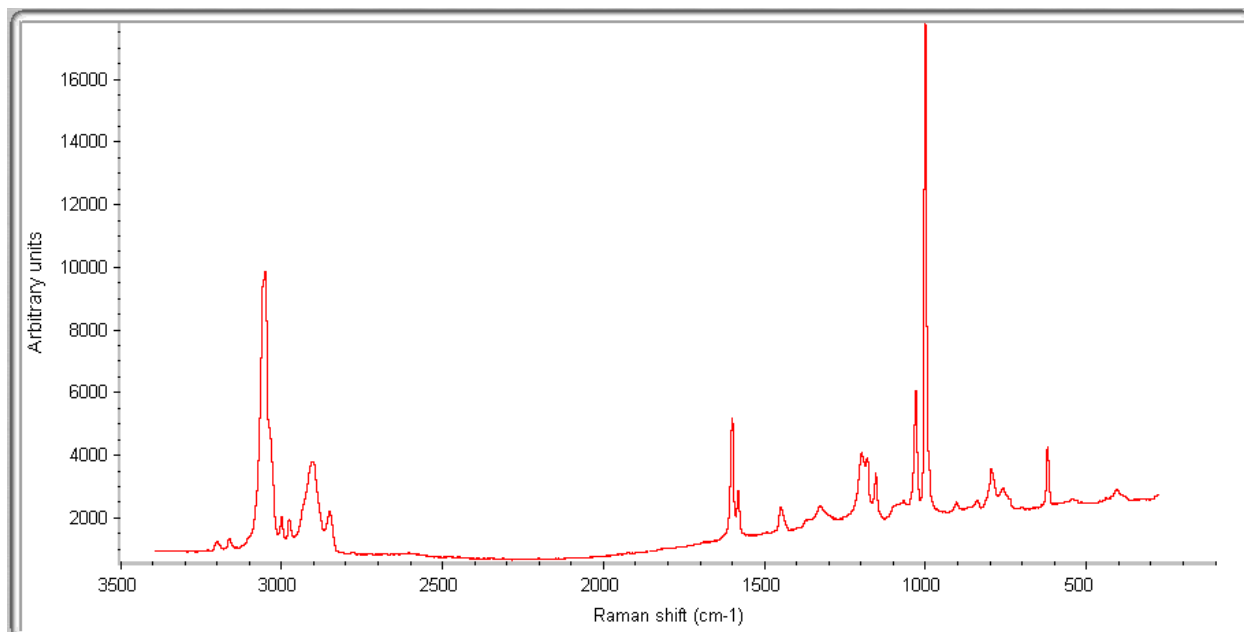
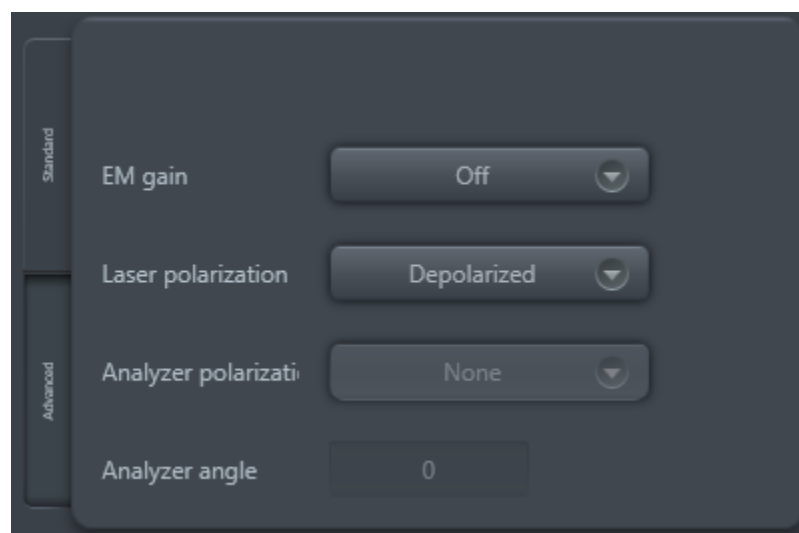


Figure 2

Below is a description of the EM gain setting

Feature	Description
EM gain	Controls the electron multiplying gain of the detector camera. EM gain increases the signal to overcome the readout noise, but it also increases other sources of noise. The optimal setting for this is highly dependent on the experiment. In general, it is recommended to run with EM gain on for most operation but to turn it off when collecting with a longer exposure time.

For samples that have good signal intensity having the EM gain set to On can saturate the detector. If you experience similar high intensity spikes in your spectrum try setting the EM gain to off.



If you are still experiencing issues with spikes in your spectrum after adjusting the settings contact Technical Support.