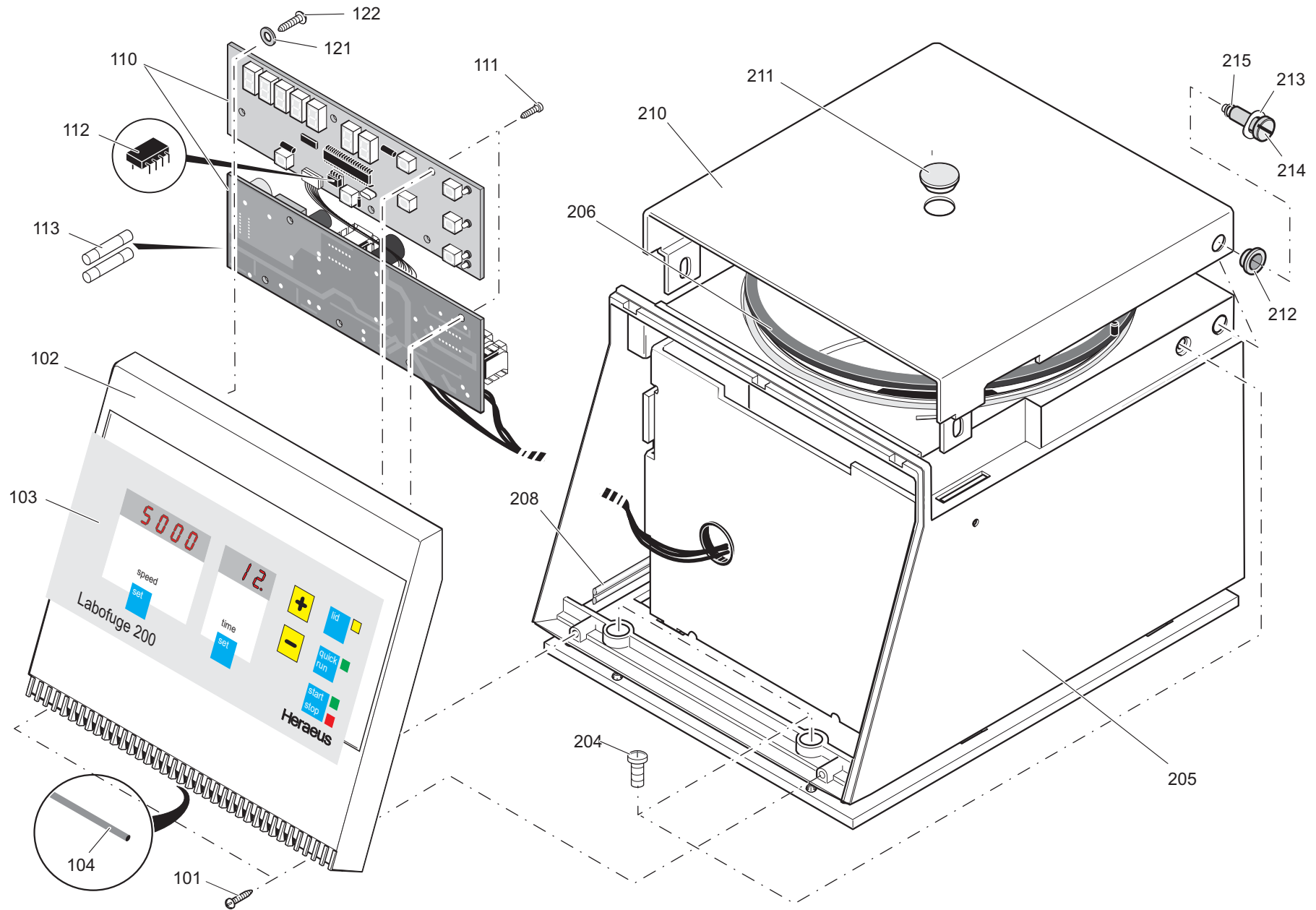


EXPLOSIONSZEICHNUNGEN
BREAK DOWN DRAWINGS



Spare-Part-List

75003630_01

LABOFUGE 200, 230V +-10% 50/60HZ

from Serial-No.

to Serial-No.

| Index | Partno. | Text |
|-------|----------|-------------------------|
| 00101 | 20460133 | SCREW 3X14 |
| 00102 | 20022598 | FRONT PANEL |
| 00103 | 20022604 | KEY FOIL |
| 00105 | 20290521 | SEAL (FOAM RUBBER) |
| 00110 | 20150103 | MAINBOARD |
| 00111 | 20460137 | SCREW 3X8 |
| 00112 | 70901052 | NV-RAM LABOFUGE 200 NEW |
| 00113 | 20230145 | FUSE |
| 00121 | 20250031 | WASHER |
| 00122 | 20460132 | SREW 3,5 X 8 |
| 00204 | 20460088 | SCREW M5 X 8 |
| 00205 | 20020726 | HOUSING |
| 00206 | 20020717 | SEAL |
| 00207 | 20220561 | BUSHING |
| 00208 | 20290473 | SEALING |
| 00210 | 70020819 | LID |
| 00211 | 20050543 | WINDOW |
| 00212 | 20350211 | COLLAR |
| 00213 | 20480250 | SPRING WASHER |
| 00214 | 20037565 | SCREW |
| 00215 | 20290419 | O - RING 4,47 X 1,78 |
| 00221 | 70022871 | BOTTOM PLATE |
| 00222 | 70022870 | ARMED BOWL |
| 00223 | 20480251 | SECURING WASHER |
| 00224 | 20430216 | SCREW M 6 X 12 |
| 00225 | 20022867 | WIRE CLOTH |
| 00226 | 20480224 | WASHER A 4,3 |
| 00227 | 20460092 | ALLEN SCREW M4 X 6 |
| 00232 | 20480157 | WASHER |
| 00233 | 20049932 | FOOT |
| 00234 | 20460112 | SCREW M 4 X 16 |
| 00235 | 20480108 | FAN WASHER A 4,3 |
| 00236 | 20220510 | DOUBLE CONNECTOR MALE |
| 00237 | 20420076 | HEXAGONAL NUT M4 |
| 00300 | 20003620 | LID LOCK 230V |
| 00304 | 20460138 | SCREW 4X10 |
| 00305 | 20440295 | SCREW M4X16 |
| 00307 | 20022873 | SCREW |

Spare-Part-List

75003630_01

LABOFUGE 200, 230V +-10% 50/60HZ

from Serial-No.

to Serial-No.

| Index | Partno. | Text |
|--------------|----------------|--------------------------|
| 00308 | 20220416 | CABLE-CLIP |
| 00310 | 20210275 | MOTOR |
| 00311 | 20020738 | MOTOR COVER |
| 00313 | 20420070 | NUT M 6 |
| 00314 | 20480251 | SECURING WASHER |
| 00315 | 10104080 | WASHER (SAND) |
| 00316 | 20022874 | ANTIVIBRATION MOUNT |
| 00322 | 20480130 | WASHER 4,3 |
| 00323 | 20190169 | MAINS CABLE |
| 00324 | 20220569 | CLIP |
| 00325 | 20480244 | LOCK WASHER |
| 00326 | 20290189 | CABLE SHEATH |
| 00327 | 20540048 | CAPACITOR |
| 00330 | 70901001 | SERVICE KIT LABOFUGE 200 |
| 00331 | 20053358 | ROTOR NUT |

Spare-Part-List

75003631 _ 01

LABOFUGE 200, 120V+10%-15% 50/60HZ

from Serial-No.

to Serial-No.

| Index | Partno. | Text |
|-------|----------|-----------------------|
| 00101 | 20460133 | SCREW 3X14 |
| 00102 | 20022598 | FRONT PANEL |
| 00103 | 20022604 | KEY FOIL |
| 00105 | 20290521 | SEAL (FOAM RUBBER) |
| 00110 | 20150178 | MAINBOARD 120 V |
| 00111 | 20460137 | SCREW 3X8 |
| 00112 | 70901066 | NV-RAM CLINIFUGE |
| 00113 | 20230189 | FUSE 6,25 A SLOW |
| 00121 | 20250031 | WASHER |
| 00122 | 20460137 | SCREW 3X8 |
| 00204 | 20460088 | SCREW M5 X 8 |
| 00205 | 20020726 | HOUSING |
| 00206 | 20020717 | SEAL |
| 00207 | 20220561 | BUSHING |
| 00208 | 20290473 | SEALING |
| 00210 | 70020819 | LID |
| 00211 | 20050543 | WINDOW |
| 00212 | 20350211 | COLLAR |
| 00213 | 20480250 | SPRING WASHER |
| 00214 | 20037565 | SCREW |
| 00215 | 20290419 | O - RING 4,47 X 1,78 |
| 00221 | 70022871 | BOTTOM PLATE |
| 00222 | 70022870 | ARMED BOWL |
| 00223 | 20480251 | SECURING WASHER |
| 00224 | 20430216 | SCREW M 6 X 12 |
| 00225 | 20022867 | WIRE CLOTH |
| 00226 | 20480224 | WASHER A 4,3 |
| 00227 | 20460092 | ALLEN SCREW M4 X 6 |
| 00232 | 20480157 | WASHER |
| 00233 | 20049932 | FOOT |
| 00234 | 20460112 | SCREW M 4 X 16 |
| 00235 | 20480108 | FAN WASHER A 4,3 |
| 00236 | 20220510 | DOUBLE CONNECTOR MALE |
| 00237 | 20420076 | HEXAGONAL NUT M4 |
| 00300 | 70003621 | LID LOCK ASSY. CPL. |
| 00304 | 20460138 | SCREW 4X10 |
| 00305 | 20440295 | SCREW M4X16 |
| 00307 | 20022873 | SCREW |

Spare-Part-List

75003631_01

LABOFUGE 200, 120V+10%-15% 50/60HZ

from Serial-No.

to Serial-No.

| Index | Partno. | Text |
|-------|----------|--------------------------------|
| 00308 | 20220416 | CABLE-CLIP |
| 00310 | 20210275 | MOTOR |
| 00311 | 20020738 | MOTOR COVER |
| 00313 | 20420070 | NUT M 6 |
| 00314 | 20480251 | SECURING WASHER |
| 00315 | 10104080 | WASHER (SAND) |
| 00316 | 20022874 | ANTIVIBRATION MOUNT |
| 00322 | 20480130 | WASHER 4,3 |
| 00323 | 20190194 | MAINS CABLE |
| 00324 | 20220569 | CLIP |
| 00325 | 20480244 | LOCK WASHER |
| 00327 | 20540344 | CAPACITOR |
| 00330 | 70901069 | SERVICE KIT CLINIFUGE/MEDIFUGE |
| 00331 | 20053358 | ROTOR NUT |