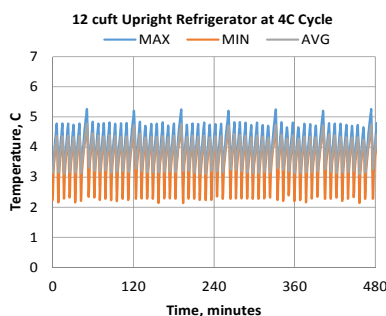
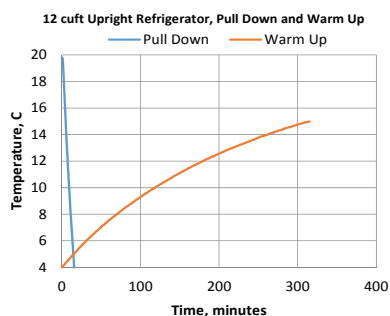
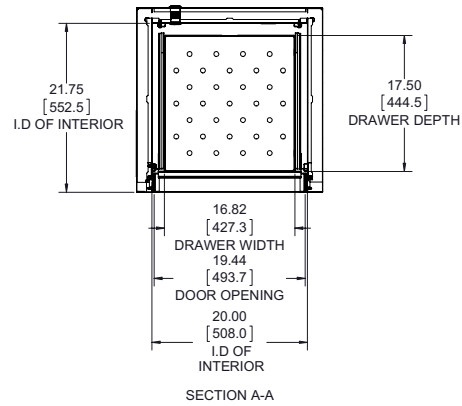


Specifications	Catalog number
	TSX1204BA
	Model Number
	TSX1204BA
Application, Rating and Electrical Data	
Application	Blood Bank (non-flammable) Refrigerator
Storage Volume	326 Liters / 11.5 Cubic Feet
Factory Set Point	4°C
Set Point Range/Adjustable Increment	3°C to 7°C/ 0.1°C
Electrical Power / Rated Current	115V 60 Hz 1 Phase / 6.25A
Building Supply Rating	15A dedicated grounded non-GFCI circuit. Protected by circuit breaker rated for inductive loads
Power Plug/Power Cord Length	15 Amp (NEMA 5-15P) / 3.048 Meters (10 feet)
Agency Listings	UL, cUL, FDA
Indoor/Outdoor Usage	Indoor Use Only
Application Environment	Non-Corrosive, Non-Flammable, Non-Explosive, Good Air Ventilation
Ambient Operating Temperature	15° C - 32° C (60° F - 90° F)
Refrigeration Configuration	
Refrigeration System	Vapor compression system
Compressor / Number / Capacity	Hermetic Variable Capacity Compressor / 1 / 315W
Condenser Type/Number	Enhanced Finned-Tube and Forced-Air Cooled / 1
Expansion Device	Capillary Tube
Evaporator Type / Defrost Method	Forced Air Evaporator Coil / Automatic Defrost
Refrigerant Charge / Flammability	R290,110gms,GWP:3 ODP:0 / Flammable
Controller/Electrical System Configuration and Features	
Controller Level	Eye Level
Power Switch	Keyed Off-On - Alarm
Controller Type	IntrLogic Control System: Digital display, Graphic thermometer, Automatic defrost system
Setpoint Security / Programmable	Yes / Yes
Compressor Safe Guard	Current protection
Control Sensor	Single RTD (1000 ohm shielded Platinum RTD)
Connectivity / Remote Outputs	Standard
Adjustable Warm / Cold Alarms	Fully Adjustable
Power Failure Alarm	Standard
Electronic Chart Recorder	Standard
Dimensions and Construction	
Interior Dimensions (D x W x H)	55.4 cm X 50.8 cm x 133.1 cm (21.8" X 20.0" X 52.4")
Exterior Dimensions (D x W x H)	77.5 cm x 61.9 cm x 185.4 cm (30.5" x 24.0" x 73.0")
Insulation	5.08 cm (2.0") High-Density Water-Blown Polyurethane Foam
Door Perimeter heater	Yes
Shelves / Load Limit	(6) Drawers Adjustable In 1" Increments. Max. Cap. per Drawer: 27 kg (60 lbs.)
All-Direction Casters	Standard with Locks
Shipping Weight	183 kg / 404 lb
Typical Performance Characteristics	

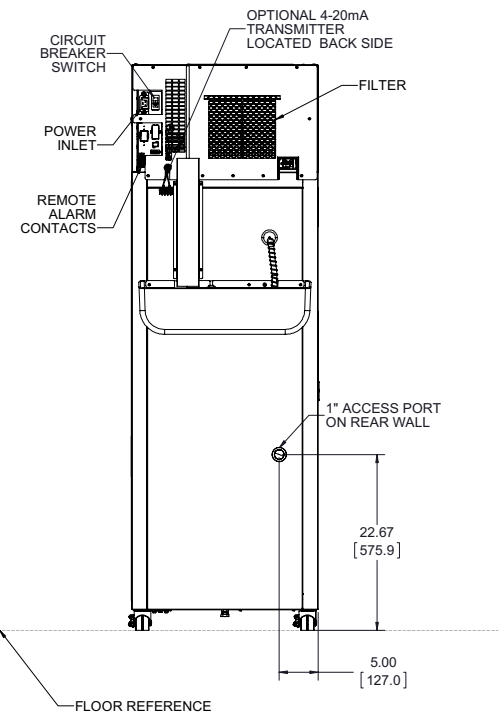
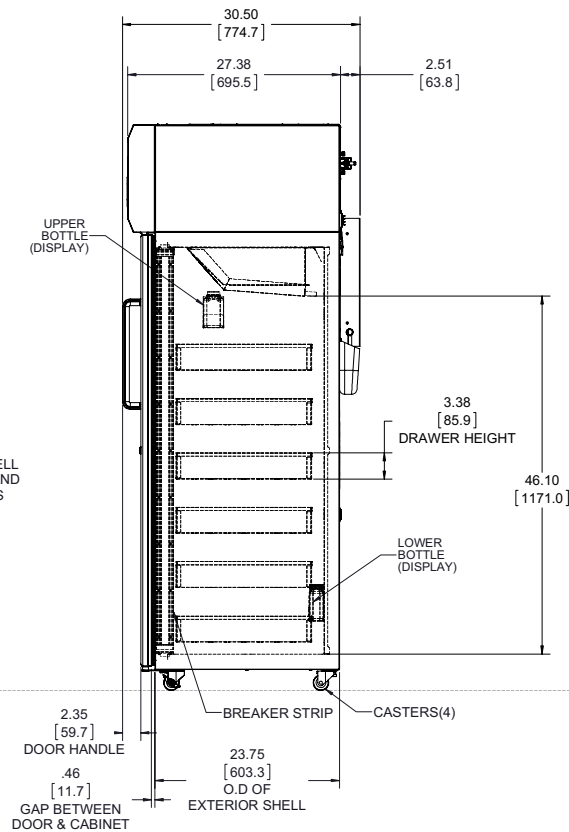
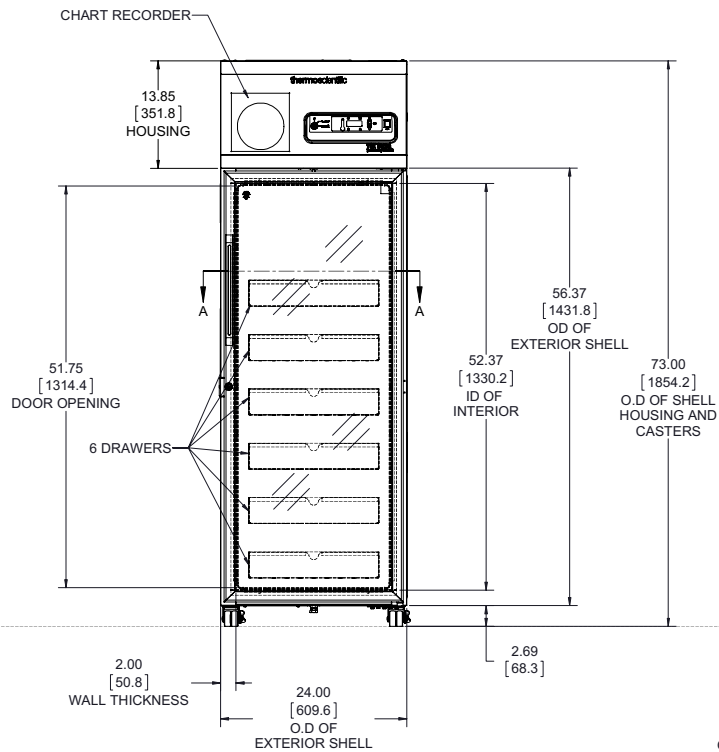


Test Unit Series Number or MSO Number:	19758-A-10
Cabinet Load:	Unloaded
Average Cabinet Temp at 4C Cycle (C):	3.8
Peak Variation from Setpoint (C):	+1.3 / -1.9
Uniformity (C):	0.5
Stability (C):	1.9
1-min Door Opening Recovery to 4C (min):	2
Duty Cycle at 4C (%):	22
Cycle (on/off) rate at 4C (min):	2 / 7
Energy Consumption (kw-hr/day):	3.1
Heat Rejection Rate (btu/hr):	434
Pull Down Time (to 4C) (min):	16
Warm Up Time (4C to 15C) (min):	315
Sound (dBA):	52

- Performance is nominal and individual units may vary.
- Product performance will differ due to product amount, product size and operating conditions.
- Continuous product enhancements may, without notice, result in amendments or omissions to this specification. Thermo Scientific cannot accept responsibility for damage, injury, loss or expenses resulting from misapplication of the information herein.



ONLY CABINET SHOWN FOR CLARITY IN TOP VIEW,  
TO ILLUSTRATE INTERIOR DIMENSIONS



NOTE: DUAL DIMENSION IS INCHES OVER MILLIMETERS  
DO NOT USE FOR ENGINEERING PURPOSES. SUBJECT TO CHANGE WITHOUT NOTICE.

12 cu.ft. Blood Bank Refrigerator  
6 Drawers  
Single Outer Door  
Top Mount Controls

327839G25\_rA