

Battery Replacement on Thermo + 4 Refrigerators & -20 -30 Freezers

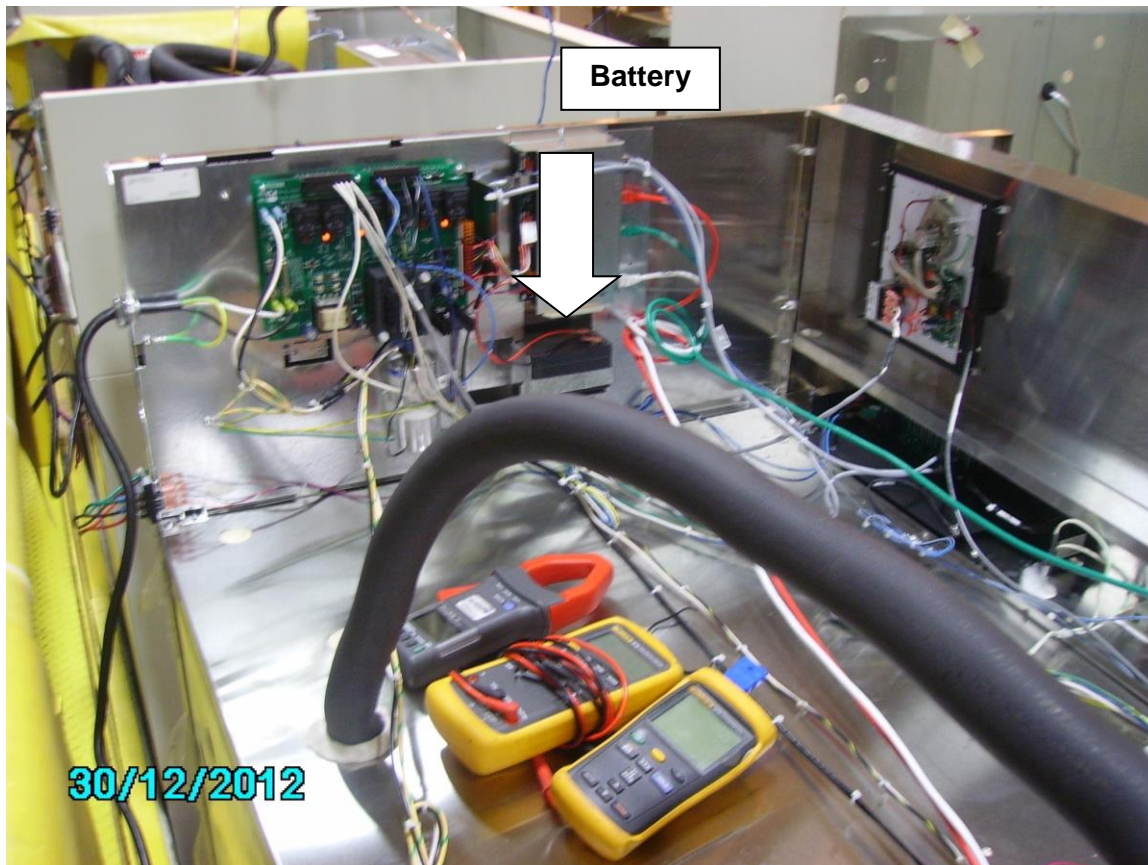
**Thermo +4 Refrigerators & -20&-30 Freezers –
(see page 3 for applicable models)**

Revision Date: October 23,2014

Charles Woody

Turn power off at the key switch and disconnect power plug from wall outlet. Remove the protective grill from the top of the unit. The battery is located in a mounting bracket just under the micro board (see photo below). Remove the red and black wires which are clipped onto the battery terminals. Remove the screw from battery strap bracket and remove battery strap. If only replacing battery # 60678H02, the battery is silicone (glued) in place from the factory and requires the silicone to be cut with a sharp knife or object between the battery base and plate (which can be difficult). After removing battery, install new battery and re-silicone to the battery bracket or place thin foam on base. Install battery strap bracket and retighten screw. Place red wire on "+" battery terminal and black wire on "-" battery terminal. Replace the protective grill and retighten screws. Reconnect power plug to the wall outlet. Turn the key switch back on to the "power on" position. When unit powers up and the display temp is below warm alarm set point, turn the key to 3:00 position to activate alarms. Press the up and down arrows on the front of the display to reset the low battery light.

Note: If you choose to leave the old battery in place, a new battery and bracket assembly can be installed below the old battery and requires two short sheet metal screws to mount on top of the unit. Battery assembly # 28109G03 S.



BB124	FRBB2304	IUF3023	LF2330	PPL5030	RPR3004	
BB234	FRBB3004	IUF3030	LF3030	PR234	RPR5004	
BB304	FRBB5004	IUF3050	LF5030	PR504	RX423	
BB504	FRCR2304	JBB2304	LR124	REB1204	RX430	
CC234	FRCR3004	JBB3004	LR234	REB2304	RX450	
CC304	FRCR4504	JBB3004	LR304	REB3004	TSFMS2305	
CC454	FRCR5004	JBB5004	LR412	REB5004	TSFMS2320	
CC504	FRCR7504	JLF1230	LR423	REC2304	UEN2320	
CC754	FRGG1204	JLF2330	LR430	REC3004	UEN3020	
FC423	FRGG2304	JLF3030	LR445	REC4504	UFP1230	
FC430	FRGG3004	JLF5030	LR450	REC5004	UFP2330	
FC445	FRGG5004	JLR2304	LR454	REC7504	UFP3030	
FC450	FRGG7504	JLR3004	LR475	REL1204	UFP5030	
FC475	FRGL1204	JLR3004	LR504	REL2304	UGL2320	

FFEN2320	FRGL2304	JLR5004	LR754	REL3004	UGL3020
FFEN3020	FRGL3004	JPL1230	LRG124	REL4504	ULT1230
FFGL1230	FRGL4504	JPL2330	LRG234	REL5004	ULT2330
FFGL2320	FRGL5004	JPL3030	LRG304	REL7504	ULT3030
FFGL2330	FRGL7504	JPL5030	LRG504	RFMS2305	ULT5030
FFGL3020	FRPH1204	JPR2304	LRG754	RFMS2320	UPF1230
FFGL3030	FRPH2304	JPR3004	PBB1204	RGL1204	UPF2330
FFGL5030	FRPH3004	JPR5004	PBB2304	RGL2304	UPF3030
FFMS2305	FRPH5004	JRG1204	PBB3004	RGL3004	UPF5030
FFMS2320	IEN2023	JRG2304	PBB5004	RGL5004	VCR2304
FFPF1230	IEN2030	JRG3004	PPL1230	RGL7504	VCR3004
FFPF2330	IGL2023	JRG5004	PPL2330	RPR1204	VCR4504
FFPF3030	IGL2030	LF1230	PPL3030	RPR2304	VCR5004
FFPF5030			IUF3004		
FRBB1204			IUF3012		