

- After termination, immediately after the rotor stops and the door unlocks, open the chamber door and measure the sample temperature using the same calibrated thermometer that was used earlier.

The measured sample temperature should be within 2°C of SET temperature. If required, repeat this procedure at other speed/temperature ranges commonly used in your run protocols.

If an out-of-range temperature is observed, re-equilibrate the chamber, rotor, and test fluid temperatures to match desired sample temperature, and repeat the test run.

Emergency Sample Recovery



WARNING

Do not open the chamber door when the rotor is spinning. In the event of a power failure (or any failure where RUN speed does not register), the brake will not operate and the rotor will coast to a stop – from high speed, deceleration to 0 could take as long as 30 minutes. Before using the mechanical override to open the chamber door, use the viewing port in the door to make sure that the rotor has stopped spinning. Opening a chamber door when a rotor is spinning exposes hazardous energy; contact with a spinning rotor could cause personal injury.

If a power failure (or malfunction that disables the door unlock function at zero speed) occurs while the rotor is spinning, a means to mechanically override the door interlock is provided to allow sample recovery. This procedure should never be used routinely, or while the rotor is spinning, and is intended for emergency sample recovery only. **Read the WARNING.**

To perform the mechanical override (refer to Figure 5-1):

- Turn the main power switch OFF, unplug the centrifuge, then use the viewing port and make sure the rotor has stopped spinning before proceeding.
- Access the interlock motor, located behind the bezel that frames Main POWER switch and KEYPAD LOCK panel in the upper right side of the front cabinet panel. Remove the four screws that secure the bezel, then remove the bezel.

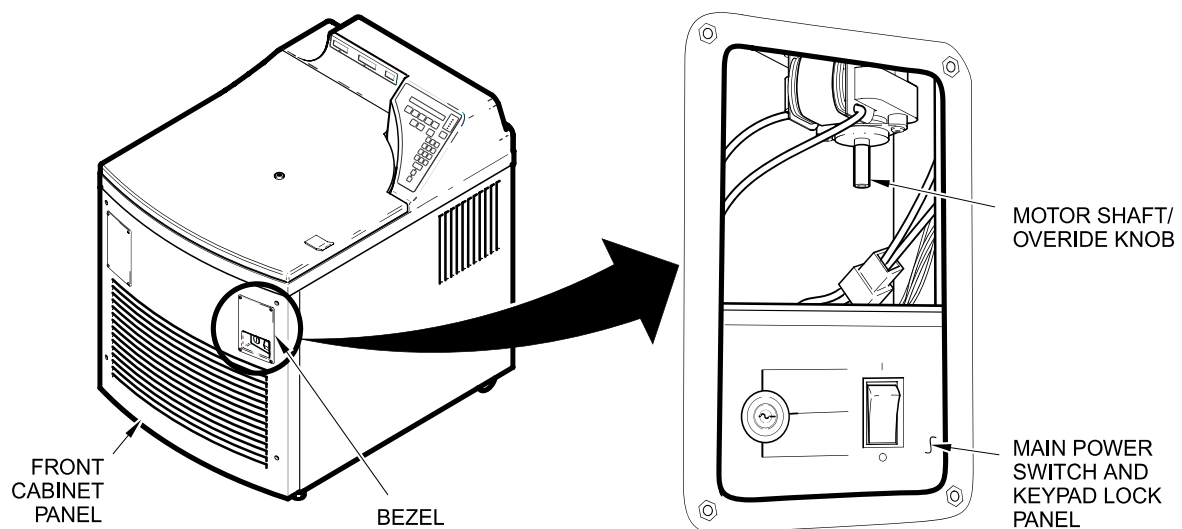


Figure 5-1. Location of Mechanical Door Override

3. Locate the interlock motor, then find the motor shaft/override knob extending down from the bottom of the motor casing (it is covered with a plastic sleeve). Spin the knob (in either direction) with your finger until the door interlock bar has been drawn back far enough to disengage the door latch brackets, so that the door can be opened using the latch handle.
4. Reinstall the bezel in the front cabinet panel, then plug-in the power cord.

Parts Ordering Information

To order replacement parts, telephone toll free 1-800-522-7746 in the United States. Outside the United States, contact your local distributor or agent for SORVALL® products. Be sure to provide a description of the part plus the centrifuge model and serial number.

Service Decontamination Policy



WARNING

Because of the characteristics of the samples likely to be processed in this centrifuge, biological or radioactive contamination may occur. Always be aware of this possibility, and take normal precautions. Use appropriate decontamination procedures should exposure occur.

If a centrifuge or rotor that has been used with radioactive or pathogenic material requires servicing by Thermo personnel, either at the customer's laboratory or at a Thermo facility, comply with the following procedure to ensure the safety of all personnel:

1. Clean the centrifuge or rotor to be serviced of all encrusted material and decontaminate it (see Maintenance Section of centrifuge or rotor instruction manual) prior to servicing by the Thermo representative or returning it to the Thermo facility. There must be no radioactivity detectable by survey equipment.

The SORVALL® Product Guide contains descriptions of commonly used decontamination methods and a chart showing method compatibility with various materials. The centrifuge or rotor instruction manual contains specific guidance about cleaning and decontamination methods appropriate for the product it describes.

Clean and decontaminate your centrifuge or rotor as follows:

For the centrifuge:

- a. Remove rotor from the rotor chamber.
- b. Remove, wash, and decontaminate motor sealing gasket and pad.
- c. Decontaminate lid, rotor chamber, and drive using an appropriate method.
- d. Remove all encrusted material from around the motor and drive assemblies.