

Chromeleon 7.3.2 Thermo Scientific IC Drivers moved to “Obsolete” category

With the release of Chromeleon 7.3.2 the ICS5000+ / ICS PDA Photodiode Array Detector / ICS-900 / ICS-1100 / ICS-1600 / ICS-2100 and other additional instrument drivers have been moved into the Obsolete driver section of the software release. These specific instrument drivers, although not obsolete are discontinued. They can be found in the Installation Configuration Manager along with other legacy obsolete drivers listed below.

Driver Obsolescence - Thermo Scientific Instruments



Thermo Scientific IC Drivers moved to “Obsolete” category

ICS Compact IC Systems

- ERC-10 Controller
- ICS-600 IC System
- ICS 900 IC System
- ICS 1000 IC System
- ICS 1100 IC System
- ICS 1500 IC System
- ICS 1600 IC System
- ICS 2000 IC System
- ICS 2100 IC System

ICS Standalone Detectors and Temperature Compartment

- PDA Photodiode Array Detector
- PDA-100U Photodiode Array Detector
- TC Thermal Compartment

ICS-3000 Modular IC System

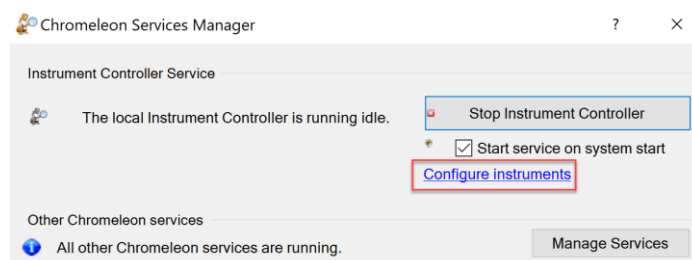
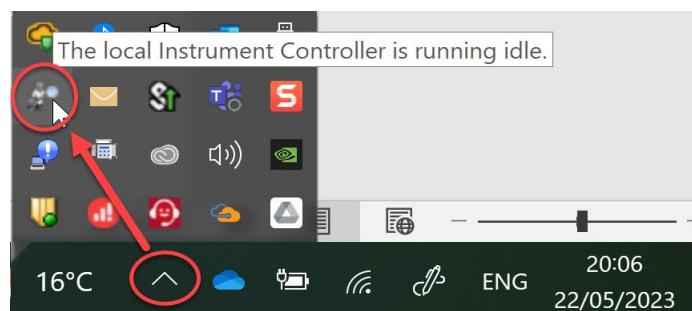
- ICS-3000 DC Detector/ Chromatography Compartment
- ICS-3000 DC:CD Conductivity Detector
- ICS-3000 DC:ED-DC Amp Electrochemical Detector
- ICS-3000 DC:ED-Int Amp Electrochemical Detector
- ICS-3000 DP Dual Pump Pump
- ICS-3000 SP Single Pump Pump
- ICS-3000 EG Eluent Generator

ICS-5000(5000+) Modular IC System

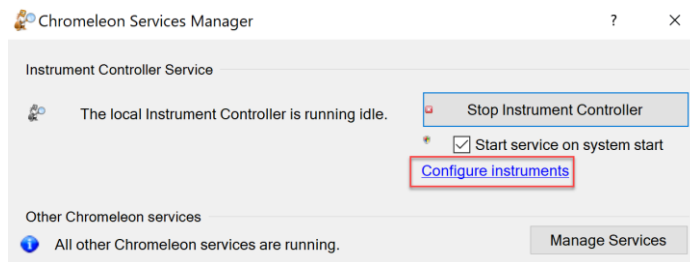
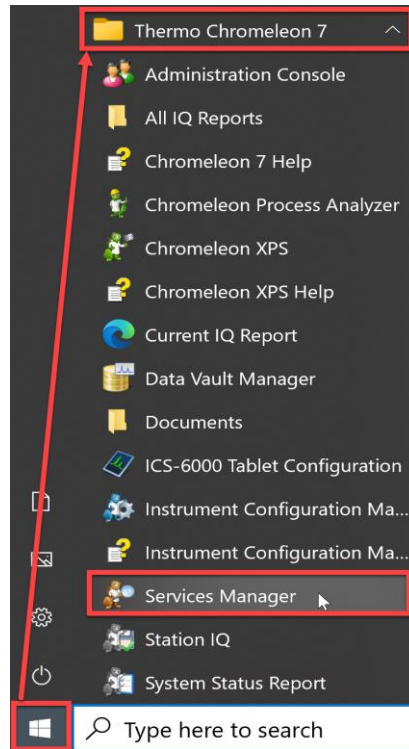
- ICS-5000 DC Detector / Chromatography Compartment
- ICS-5000 DC:CD Conductivity Detector
- ICS-5000 DC:ED-DC Amp Electrochemical Detector
- ICS-5000 DC:ED-Int Amp Electrochemical Detector
- ICS-5000 DP Dual Pump
- ICS-5000 SP Single Pump
- ICS-5000 EG Eluent Generator

The drivers can be found and installed by opening the Chromeleon 7.3.2 Instrument Configuration Manager in the bottom right corner (system tray of the Windows taskbar) click on show hidden icons and click on the Chromeleon 7 icon of your PC or going to Start / Thermo Chromeleon 7 / Services Manager. The Instrument Controller must be started and running Idle with all other Chromeleon services running.

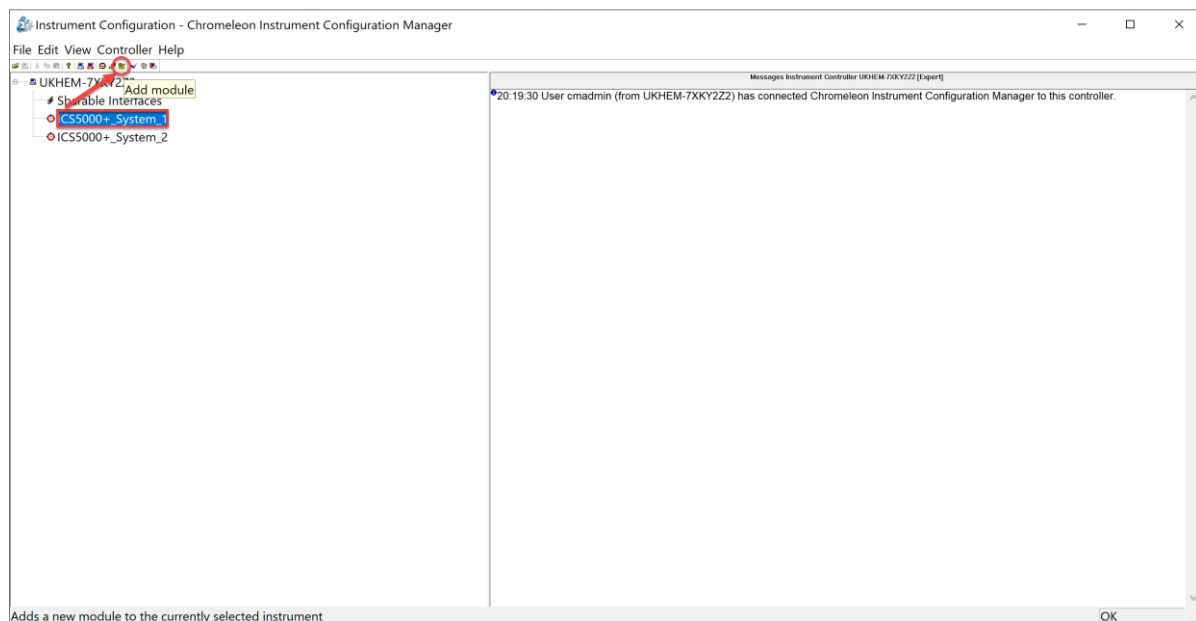
Local Instrument Controller bottom right corner (system tray of the Windows taskbar) click on show hidden icons and click on the Chromeleon 7 icon.



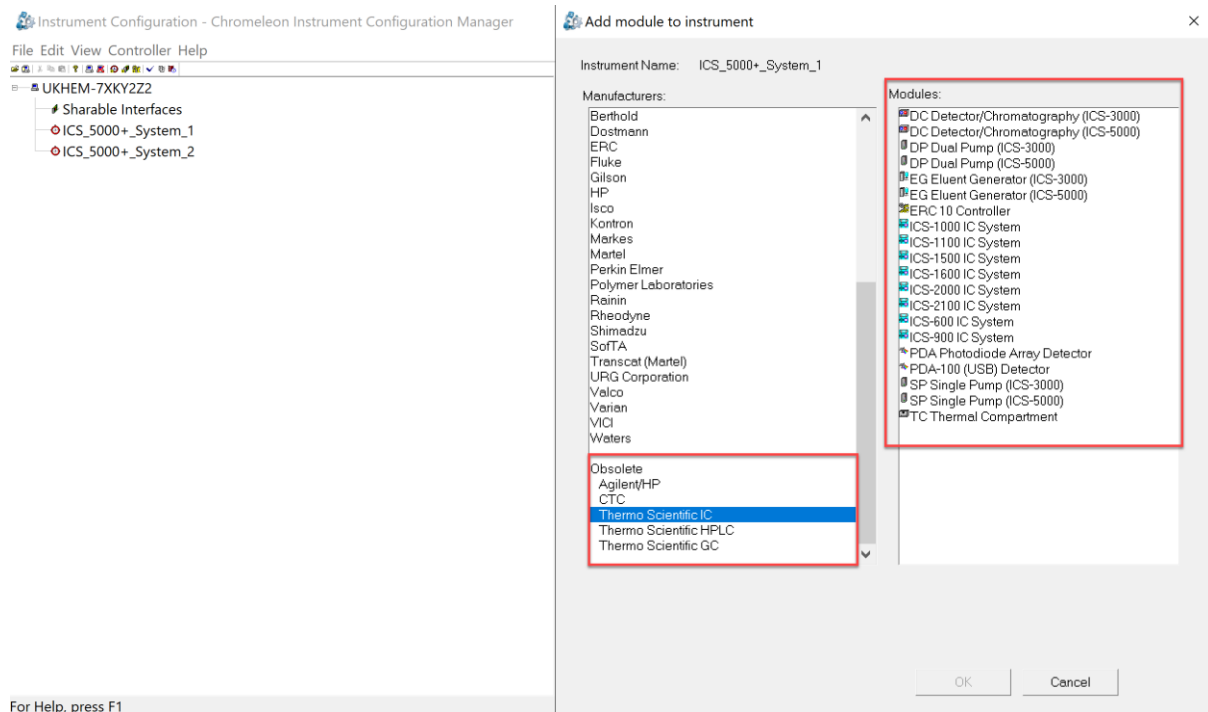
Start / Thermo Chromeleon 7 / Services Manager.



Select or create a new Instrument timebase and add module.



Scroll down to the bottom and within the Obsolete section click on Thermo Scientific IC. A list of “Obsolete” drivers will appear. Here you can find and configure the Thermo Scientific Ion Chromatography instrument modules desired as per the Chromeleon installation guide.



For Help, press F1