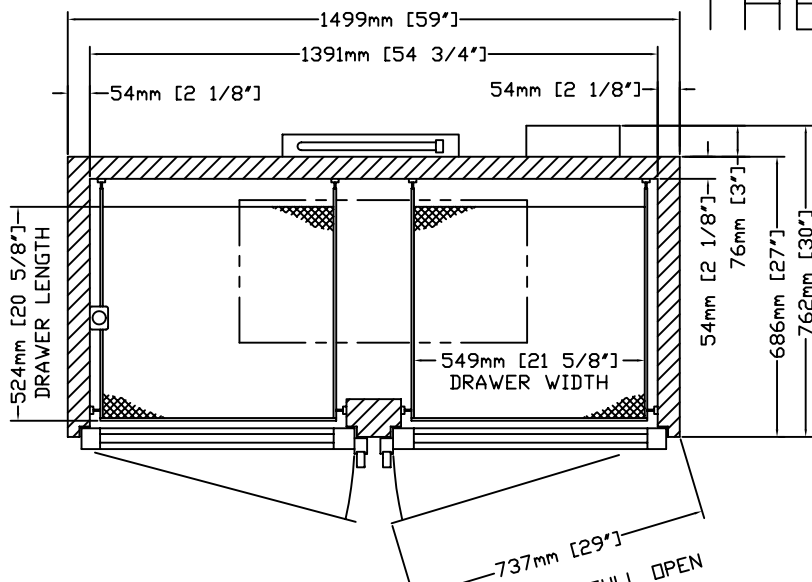


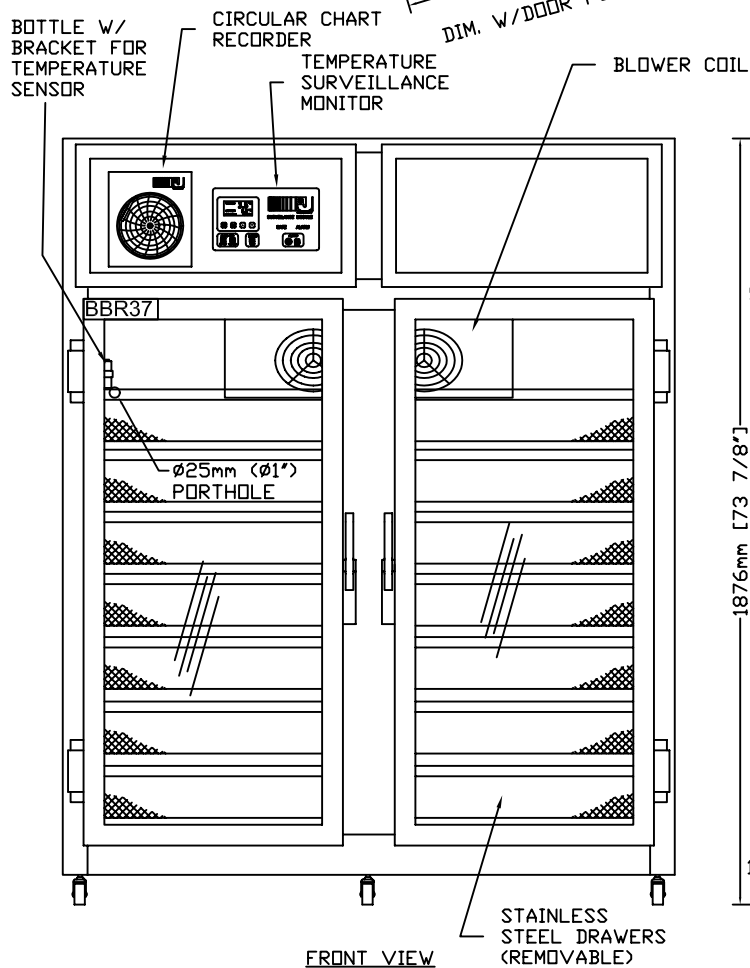
THERMO SCIENTIFIC JEWETT BBR37

BLOOD BANK REFRIGERATOR

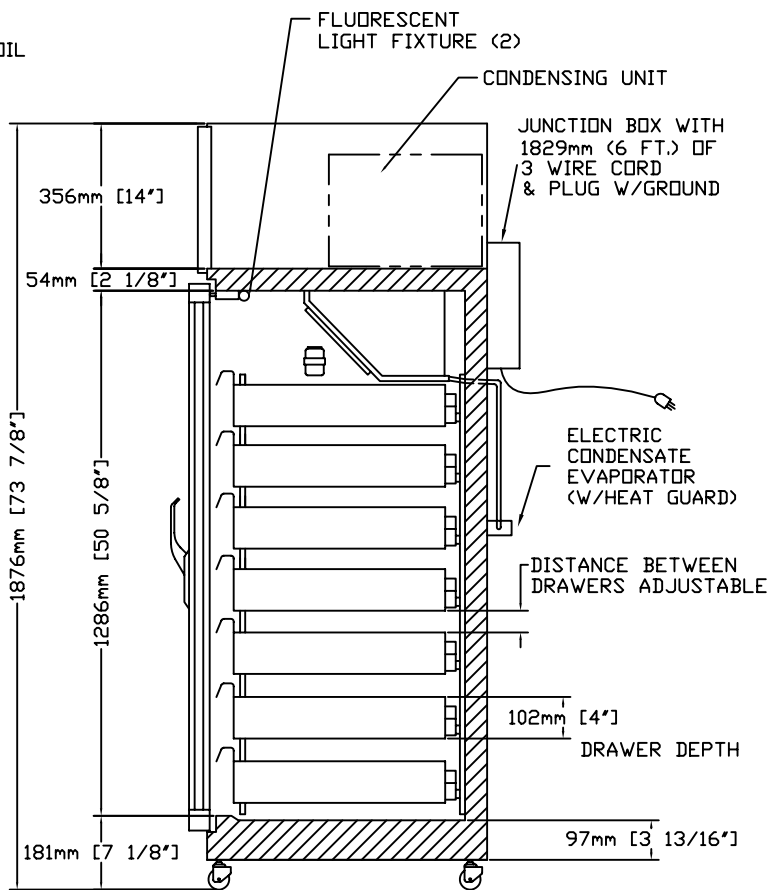
2° - 4° C
(36° - 39°F)



TOP VIEW-SECTION



FRONT VIEW



SIDE VIEW-SECTION

10/2007

JEWETT BBR37

GENERAL SPECIFICATIONS

EXTERIOR - FRONT & SIDES: BEIGE EPOXY, DOOR FRAME: ALUMINUM, ANODIZED
CONTROL PANEL: BLUE

WIDTH 1499mm (59") DEPTH 762mm (30") HEIGHT 73 7/8" (1876mm)

INTERIOR - STAINLESS STEEL

WIDTH 1391mm (54 3/4") DEPTH 597mm (23 1/2") HEIGHT 1286mm (50 5/8")

INSULATION - POLYURETHANE FOAMED-IN-PLACE (CFC FREE)

GASKET - MAGNETIC

DOORS - TRIPLE PANE HEATED GLASS WITH HEATED FRAME

HARDWARE - EDGEMOUNT, CHROME PLATED, ADJUSTABLE, CYLINDER LOCKS

DRAWERS - (14) STAINLESS STEEL WITH FULL EXTENSION BALL BEARING SLIDES,
ADJUSTABLE ON 25mm (1") CENTERS

WIDTH 549mm (21 5/8") LENGTH 524mm (20 5/8") DEPTH 102mm (4")

LIGHTING - FLUORESCENT

TEMP CONTROL - SOLID STATE ELECTRONIC, SET TO OPERATE AT 2° TO 4°C

COOLING UNIT - BLOWER COIL, AUTOMATIC OFF-CYCLE DEFROST

CONDENSING UNIT - 1/3 H.P. HERMETICALLY SEALED

NOMINAL BTU'S TO ROOM AMBIENT - 1114 WATTS (3800 BTU/HR)

REFRIGERANT - R-134a

ELECTRICAL DATA - VOLTAGE 120-60-1 AMPERAGE 12.2 UL & cUL

230-50-1 6.1 CE

230-60-1 6.1 NO UL,CE

CAPACITY - 1059 L (37.4 CU. FT.) 450 ML. PLASTIC BAGS (QTY. OF 630)

TEMPERATURE MONITORING SYSTEM - MODEL HemaPro 2000 W/ALARM POINTS AT
1.5° & 5.5°C

CIRCULAR CHART RECORDER - MODEL 7ER

CASTERS - 51mm (2") WHEELS, FRONT SWIVEL & LOCK.

PORTHOLE - Ø25mm (Ø1") LOCATED ON BACK OF UNIT

SHIPPING WEIGHT - 375 KG. (825 LB.)

SHIPPING VOLUME - 3.64 CU. METERS (128.6 CU. FT.)