

thermo**scientific**

PA 800 Plus Driver

Installation Guide

Software Version 1.1

thermo**scientific**

Copyright

Copyright © 2023 Thermo Fisher Scientific Inc. All rights reserved.

Trademarks

Microsoft and Windows, are registered trademarks of Microsoft Corporation

SCIEX and PA 800 are registered trademarks of AB SCIEX Pte. Ltd or their respective owners in the United States and/or certain other countries (see AB SCIEX website)

All other trademarks are property of Thermo Fisher Scientific Inc. and its subsidiaries.

Thermo Fisher Scientific Inc. provides this document to its customers with a product purchase to use in the product operation. The document is copyright protected; any reproduction of the whole or any part of this document is strictly prohibited, except with the written authorization of Thermo Fisher Scientific Inc.

This document is provided “as is”. The contents of this document are subject to being changed, without notice, in future revisions.

Thermo Fisher Scientific Inc. makes no representations that this document is complete, accurate, or error-free. Thermo Fisher Scientific Inc. assumes no responsibility and will not be liable for any errors, omissions, damage, or loss that might result from any use of this document, even if the information in the document is followed properly.

This document is not part of any sales contract between Thermo Fisher Scientific Inc. and a purchaser. This document shall in no way govern or modify any Terms and Conditions of Sale. The Terms and Conditions of Sale shall govern all conflicting information between the two documents.

Document History

Revision: 1.0, original document

Software version 1.1

For Research Use Only. Not for use in diagnostic procedures.

Table of Contents

1	About the Documentation	4
1.1	About this Document	4
1.2	Document Conventions	4
1.3	Related Documents	4
2	System Requirements/Compatibility	5
2.1	Supported Chromeleon versions	5
2.2	Supported Chromatography Instruments & Modules	5
2.3	PC Hardware Requirements	5
2.4	Supported Operating Systems	5
2.5	Installed Third-Party Software	6
2.5.1	Microsoft .NET Framework	6
2.5.2	Windows Monthly Rollups and Security-only Updates	6
2.5.3	National Instruments GPIB Drivers	6
2.6	Configure Windows	12
2.6.1	Disable Fast Startup (Windows 10)	12
2.6.2	Disable Windows Power Management	12
2.6.3	Disable USB Power Management	12
3	Installing PA 800 Plus Driver	14
3.1	Prerequisites	14
3.2	Installation Procedure	14
3.2.1	Upgrade	15
3.2.2	Unattended Installation	15
3.3	Troubleshoot Software Installation	15
3.3.1	Repair an Installation	16
3.3.2	System Status Report	16
4	Uninstalling PA 800 Plus Driver	18
5	Index	19

1 About the Documentation

1.1 About this Document

The PA 800 Plus driver provides an interface for controlling the SCIEX PA 800 Plus Capillary Electrophoresis system with the Chromeleon software.

This guide describes the hardware and software requirements for installing the software and configuring your chromatography system.

1.2 Document Conventions

The following formatting is used throughout the document to indicate text with special importance.

Caution: Indicates text that must be followed carefully to avoid potential problems.

Note: Indicates information of special interest.

Tip: Indicates information that will help you to use the software more efficiently.

☑ Indicates a requirement that must be met.

1.3 Related Documents

In addition to this installation guide, the following documentation is available:

- *PA 800 Plus Release Notes*
- *PA 800 Plus Quick Start Guide*

The PA 800 Plus Driver PDF documents are provided on the PA 800 Plus Driver installation disk in the folder **Documents**, and also from the Windows start menu via **Start > SCIEX PA 800 Plus Driver > Documents**.

The following Chromeleon 7 documentation is available via **Start > Thermo Chromeleon 7 > Documents**:

- *Chromeleon 7 Installation Guide*
- *Chromeleon 7 Quick Start Guide*
- *Chromeleon 7 Online Help*

2 System Requirements/Compatibility

2.1 Supported Chromeleon versions

The PA 800 Plus has been validated for use with the following versions of Thermo Fisher Scientific Chromeleon:

- Chromeleon 7.2.10 MUF and later
- Chromeleon 7.3.1 and later

2.2 Supported Chromatography Instruments & Modules

The PA 800 Plus facilitates the control within Chromeleon of the PA 800 Plus system equipped with a PDA, UV or LIF detector.

2.3 PC Hardware Requirements

The PC hardware that is needed for the PA 800 Plus Driver is determined by the requirements of the Chromeleon software. For details, please refer to documentation of the Thermo Fisher Scientific Chromeleon CDS.

For normal PCs, the following configuration is recommended:

Processor	Recommended:	Quad Core Desktop CPU
RAM	Recommended:	16 GB or higher
Hard Disk	Recommended:	30 GB
Optical Drive		DVD
Display	Recommended:	1440 x 900 or higher resolution
USB Port, RS232 Serial Port, PCI Slot	Thermo Scientific modules:	1 or more additional port(s)
Refer to the <i>Chromeleon 7 Online Help</i> for further information about specific modules. (For information about connecting Thermo Scientific chromatography modules see the documentation of the module to be connected.)		

Note: Thermo Fisher Scientific can only guarantee the correct operation of PA 800 Plus Driver if both the above requirements and the hardware and software requirements of the Chromeleon software are met.

2.4 Supported Operating Systems

The choice of operating system depends on both the requirements of the Chromeleon software (including Feature Releases or Service Releases) and the requirements of PA 800 Plus Driver.

PA 800 Plus Driver is compatible with:

- Windows 10 Enterprise and Windows 10 Pro, x64 (English version)
- Windows Server 2016 (x64 English)
- All modules which run on Windows 10 are expected to run on a Windows 11 PC without issue

Note: The option *Turn on fast startup (recommended)* should be disabled in the Windows 10 shutdown settings. This ensures that the Chromeleon Instrument Controller Service is stopped correctly on system shutdown and prevents potential instrument connection issues when the computer is powered up again.

2.5 Installed Third-Party Software

2.5.1 Microsoft .NET Framework

The PA 800 Plus Driver requires Microsoft .NET Framework, version 4.

2.5.2 Windows Monthly Rollups and Security-only Updates

For optimum security, it is recommended that you keep your systems up to date with the latest Windows Monthly Rollups and Security-only updates. However, there is always a risk that an update may affect operation of the software.

Note: Thermo Fisher Scientific does not formally validate Windows Monthly Rollups or Security-only updates. Installation and testing of Monthly Rollups and Security-only updates is the responsibility of the respective installation site. Compatibility with every Monthly Rollup or Security-only update cannot be guaranteed.

Install Monthly Rollups and Security-only updates as soon as practicable to keep the window of vulnerability as small as possible. You should briefly test the Monthly Rollup or Security-only update in the context of the laboratory's installation and operating procedures.

2.5.3 National Instruments GPIB Drivers

On a system that will control the instrument, the PA 800 Plus Driver requires National Instruments GPIB driver version 2022 Q4 or a more recent version. Any previous versions should be removed from the PC.

To install the National Instruments GPIB drivers:

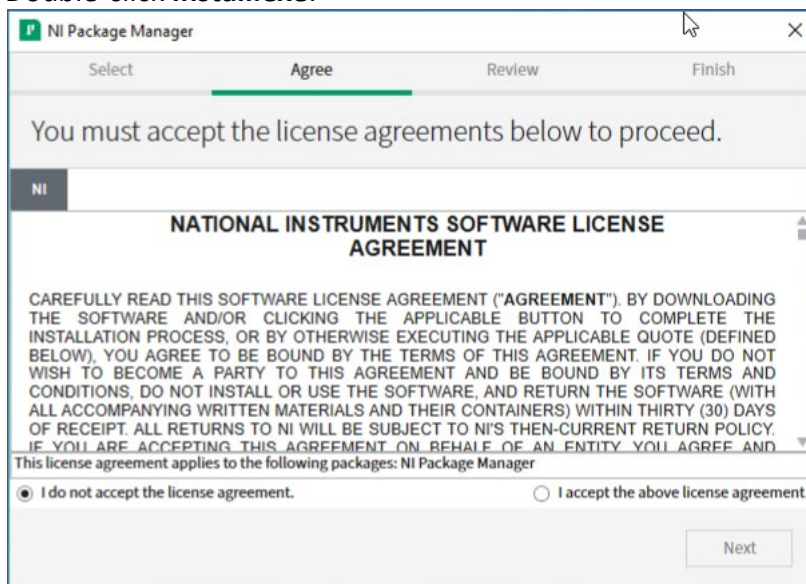
1. Log onto Windows as a user with full local administrator privileges.
2. Download the National Instruments GPIB driver version 2022 Q4 or later from the National Instruments website and save to your PC.

3. Double-click **ni-488.2_22.8.0_offline.iso** in the root folder:

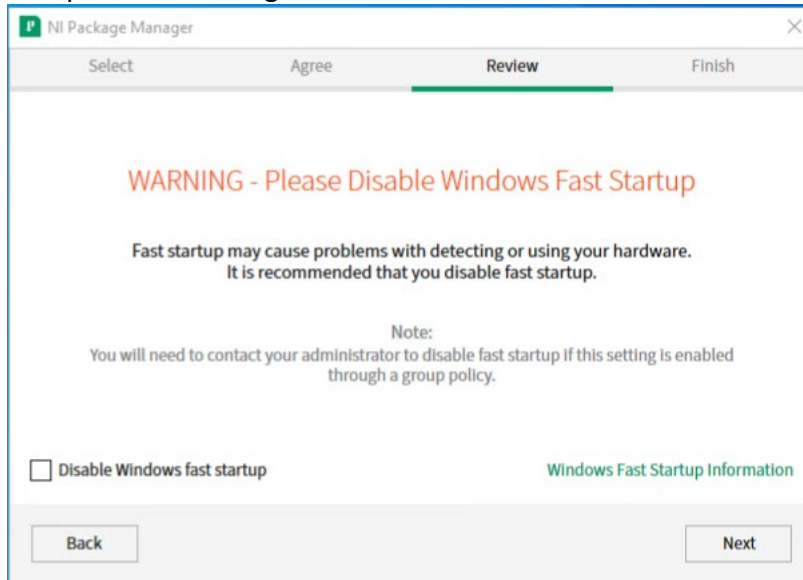
Name	Date modified	Type	Size
bin	3-10-2022 12:44	File folder	
Documents	3-10-2022 12:44	File folder	
feeds	3-10-2022 12:44	File folder	
pool	3-10-2022 12:44	File folder	
Install.exe	26-9-2022 22:24	Application	1.425 KB
InstallCHS.dll	26-9-2022 22:24	Application extens...	81 KB
InstallDEU.dll	26-9-2022 22:24	Application extens...	82 KB
InstallFRA.dll	26-9-2022 22:24	Application extens...	82 KB
InstallJPN.dll	26-9-2022 22:24	Application extens...	82 KB
InstallKOR.dll	26-9-2022 22:24	Application extens...	82 KB
patents.txt	3-10-2022 12:44	TXT File	28 KB



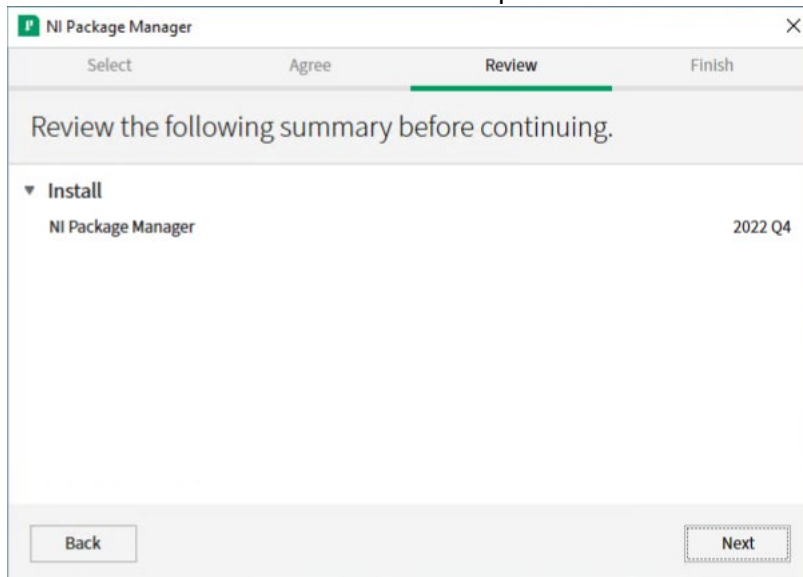
4. Double-click **Install.exe**:



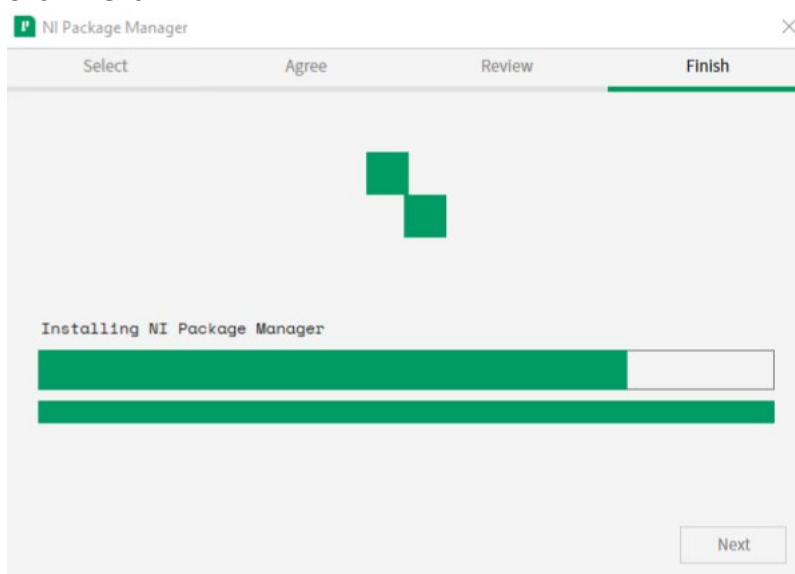
5. Accept the license agreements and click **'Next'**:

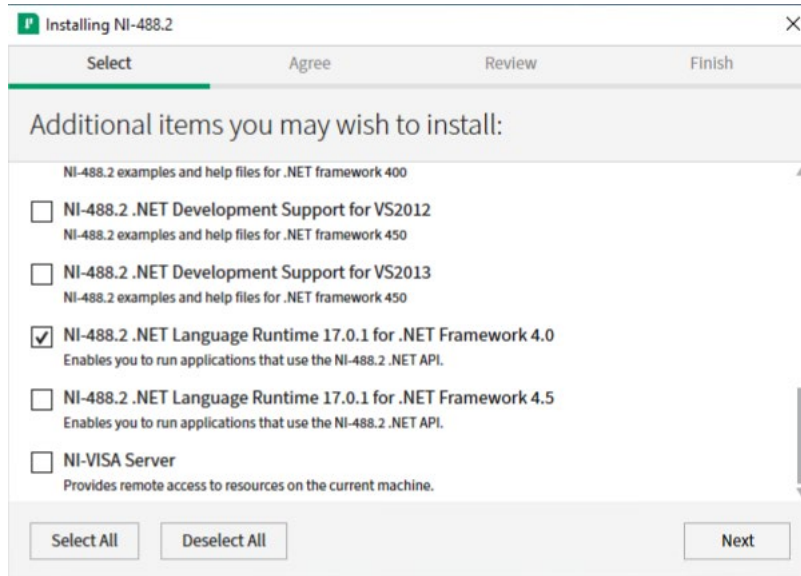


6. **Uncheck** 'Disable Windows fast startup' and click **'Next'**:

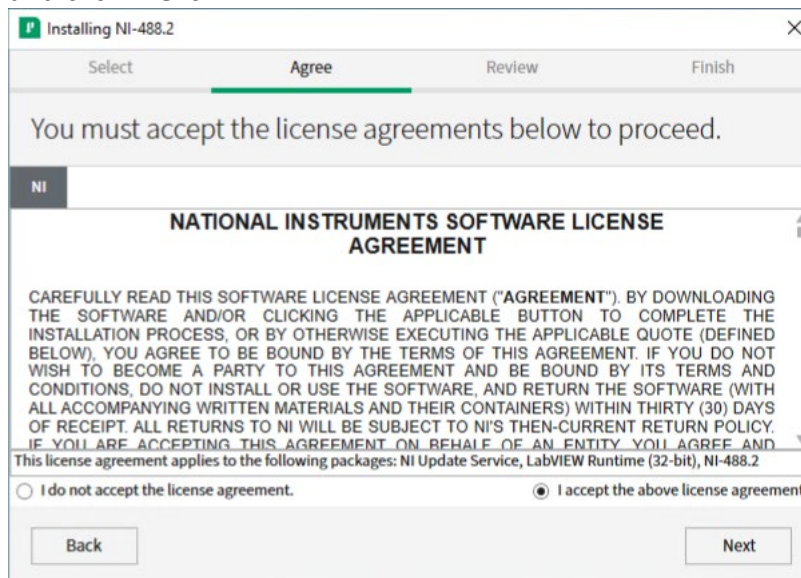


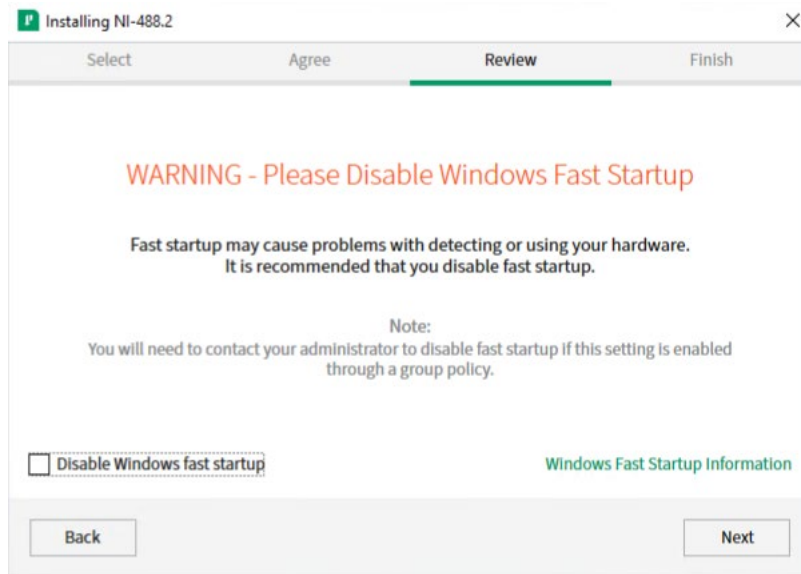
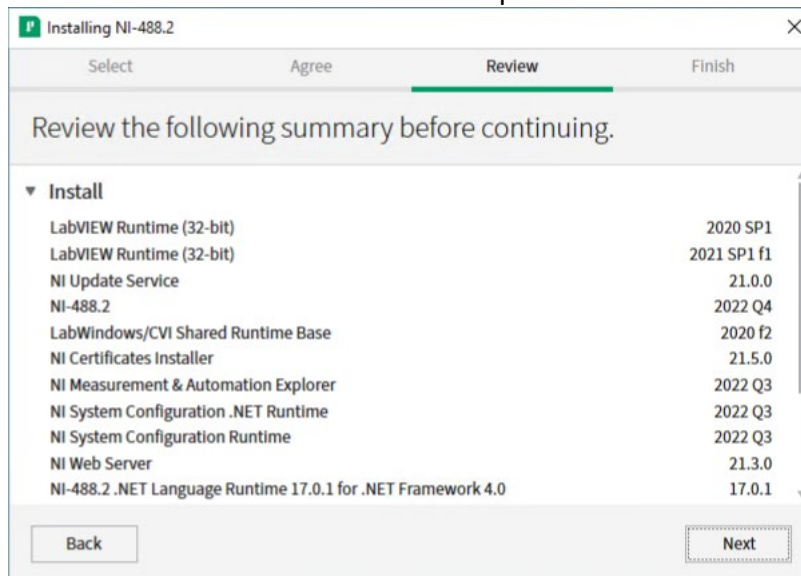
7. Click **'Next'**:



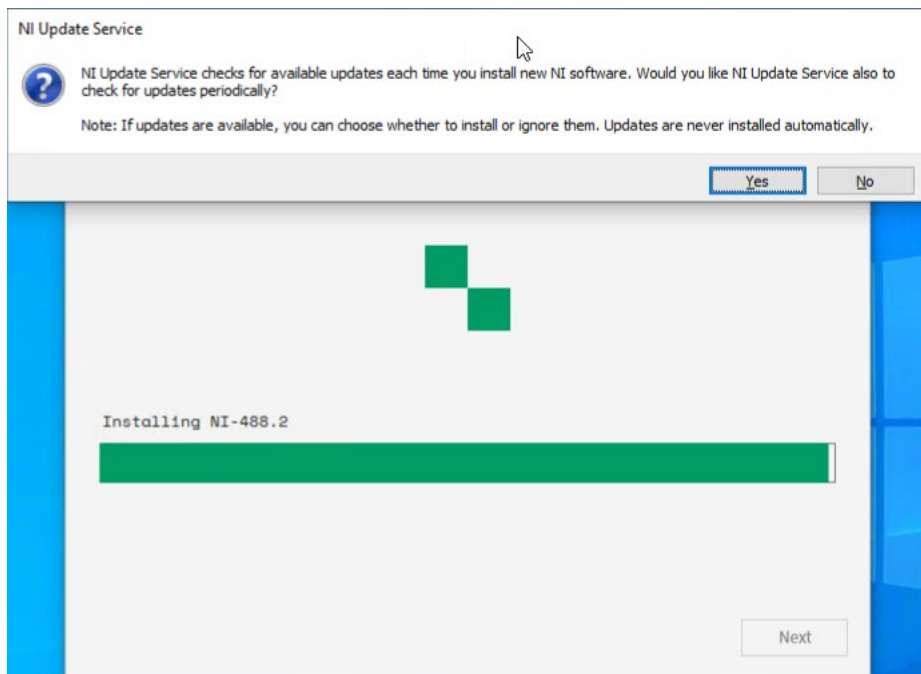
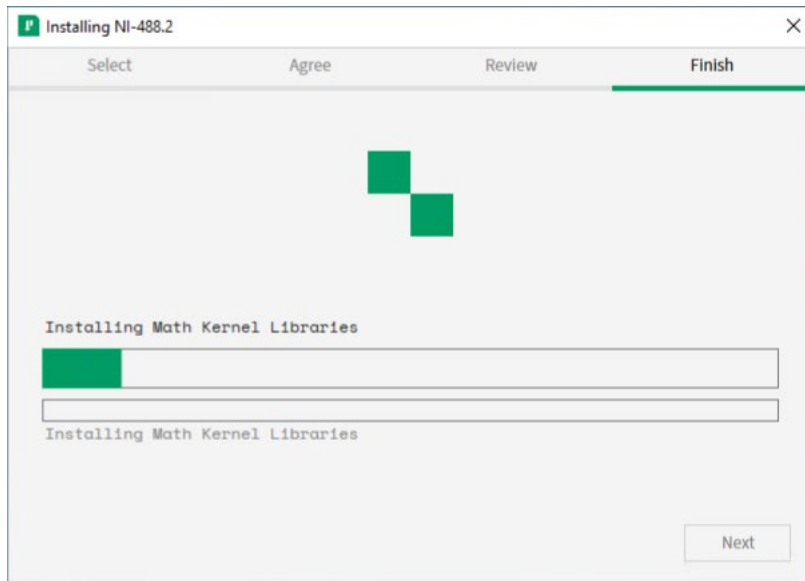


8. Select at least the following items:
- NI Certificates Installer
 - NI-488.2 MAX Support
 - NI-488.2 .NET Language Runtime 17.0.1 for .NET Framework 4.0
- and click **'Next'**:

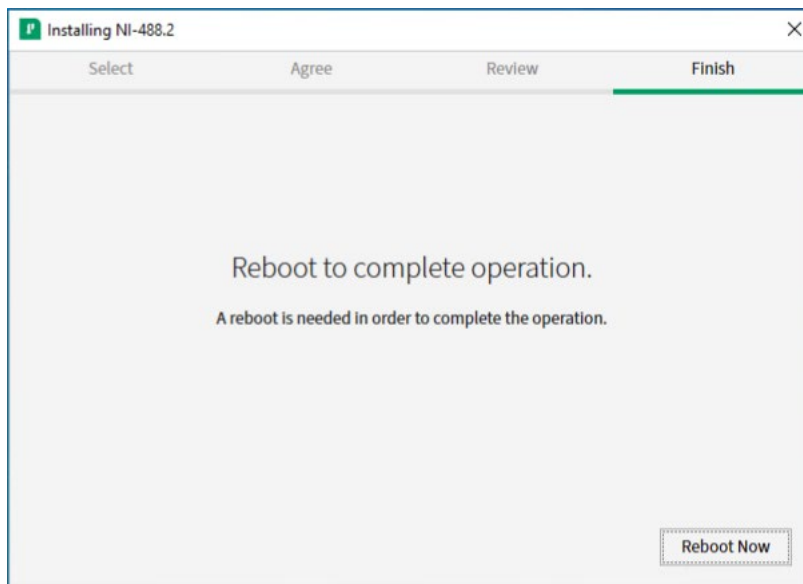


9. Accept the license agreements and click **'Next'**:10. Uncheck 'Disable Windows fast startup' and click **'Next'**:11. Review the summary and click **'Next'**:

12. The National Instrument installer starts:



13. Choose whether to have the NI Update Service check for updates periodically:



14. Click 'Reboot Now' to reboot the PC.

2.6 Configure Windows

2.6.1 Disable Fast Startup (Windows 10)

On instrument control PCs the option **Turn on fast startup (recommended)** should be disabled in the Windows 10 shutdown settings. This ensures that the Chromeleon Instrument Controller Service is stopped correctly on system shutdown and prevents potential instrument connection issues when the computer is powered up again.

2.6.2 Disable Windows Power Management

If a computer goes into **Standby** or **Hibernate** mode while the Chromeleon Instrument Controller Service is running, the USB subsystem will become unavailable. As a result, USB-dependent modules will stop functioning and operation is interrupted.

To disable Windows power management on instrument control PCs:

1. From the **Control Panel** navigate to **Power Options > All Control Panel Items > Power Options > Create a Power Plan**.
2. Select **High Performance**.
3. Click **Edit Plan Settings**.
4. Set every drop-down list to **Never**.
5. Click **Save Changes**.

2.6.3 Disable USB Power Management

To avoid problems during instrument control, USB specific power saving options must be turned off as well.

To disable USB power management on instrument control PCs:

1. From the **Control Panel** open **Device Manager**.

2. Expand **Universal Serial Bus Controllers**.

Tip: On some systems, **Universal Serial Bus Controllers** may be called **USB Controller**.

3. Right-click the **USB Root Hub** or **Generic USB Hub** (multiple instances of each are possible) for which you want to change the power savings options, and click **Properties**.
4. On the **USB Root Hub** (or **Generic USB Hub**) **Properties** dialog box, click the **Power Management** tab.
5. Clear the **Allow the computer to turn off this device to save power** option.
6. Repeat steps 4 to 6 above for all remaining USB instances.

Note: For instruments controlled by LAN, power management of the LAN card that controls the instrument must be disabled. This is achieved by performing steps similar to those described above.

3 Installing PA 800 Plus Driver

Follow the instructions below to perform the initial PA 800 Plus Driver installation or to upgrade the software from an earlier version. When you install PA 800 Plus Driver on a PC on which an earlier version of PA 800 Plus Driver is installed, the earlier version will be upgraded.

Ensure that PA 800 Plus Driver is installed on all computers that are required to control any system supported for use with this software and acquire and process data of any of these instruments.

Depending on the network configuration it may also be required to be installed on Citrix or other terminal servers.

3.1 Prerequisites

Make sure the following prerequisites are met before you install PA 800 Plus Driver:

- ✓ Chromeleon (relevant edition for customer's configuration) software must be installed before installing PA 800 Plus Driver.
- ✓ The appropriate instrument class 3 license.
- ✓ The person installing PA 800 Plus Driver must be logged on as a Windows user with local administrator privileges.

IMPORTANT: Do not connect any analytical instruments to the PC until after you finish the software installation. This is indicated by the Chromeleon Installation Qualification (IQ) having been completed and passed.

3.2 Installation Procedure

Follow the instructions here to perform the initial PA 800 Plus Driver installation or to upgrade the software from an earlier version.

1. Check that the prerequisites for installation (see 3.1) have been met
2. Log onto Windows as a user with full local administrator privileges.

IMPORTANT: Installation of PA 800 Plus Driver without the required privileges will fail or be incomplete.

3. Insert or download the PA 800 Plus Driver medium.
4. Double-click **Setup.exe** in the root folder. The PA 800 Plus Driver Setup window appears.
5. Click **Next**.
6. Enter your **User Name** and **Company Name**, select "Anyone who used this computer (all users)" and click **Next**.
7. Review the **Settings** and click **Next**.
8. After the installation has completed click **Finish**.

Tip: A User Account Control (UAC) message may be displayed shortly after clicking **Install**. If the message is not acknowledged, it will time out after 2 minutes and the installation will be interrupted. To avoid this, do not leave the installation unattended until after the UAC message appears.

Note: It might be necessary to reboot the PC during or at the end of the installation. After reboot, the administrator running the setup must login again so that the installation process can be completed correctly.

9. Remove the installation medium. Store it in a safe place, away from heat or moisture.

Note: PA 800 Plus Driver always installs with a proper PA 800 Plus Driver license. It is not necessary to install or configure a license

3.2.1 Upgrade

Due to a change in .NET version from 3.5 to 4.x with this newer driver, an upgrade from the previous version (1.0) of the driver is not possible. Please remove the previous version of the driver and follow the instructions in the previous section.

3.2.2 Unattended Installation

In the event that an unattended installation is desired, the following steps may be used in place of steps 4-8 above:

3. Open a Command-prompt.
4. Go to the directory where the setup.exe is located.
5. Enter `setup.exe -s -fl"<PATH>\install.iss"`

3.3 Troubleshoot Software Installation

The setup process itself checks for various conditions and provides useful hints/warnings for preventing installation issues. Therefore, always observe the instructions during setup. For example, the setup checks the following:

- Does the user who started the setup have local administrator privileges?
- Are the operating system requirements fulfilled?
- Is the correct version of Chromeleon installed?

Make sure that all requirements and Windows configuration steps described in Sections 2 and 3.1 are fulfilled/performed.

To identify installation issues, check the installation qualification report for errors and warnings. If you find errors, try to repair the installation as described in Section 3.3.1.

Tips: Remember, that you can re-run installation qualification at any time. You may access the installation qualification reports via the **Start** menu: **Start > Thermo Chromeleon 7 > All IQ Reports**

3.3.1 Repair an Installation

Follow the instructions below to repair a PA 800 Plus Driver installation:

Note: You will need access to the PA 800 Plus Driver installation medium to repair an installation.

1. Insert the PA 800 Plus Driver installation medium into the PC.
2. Click **Run Setup.exe**. This starts the PA 800 Plus Driver setup in **Maintenance mode**.

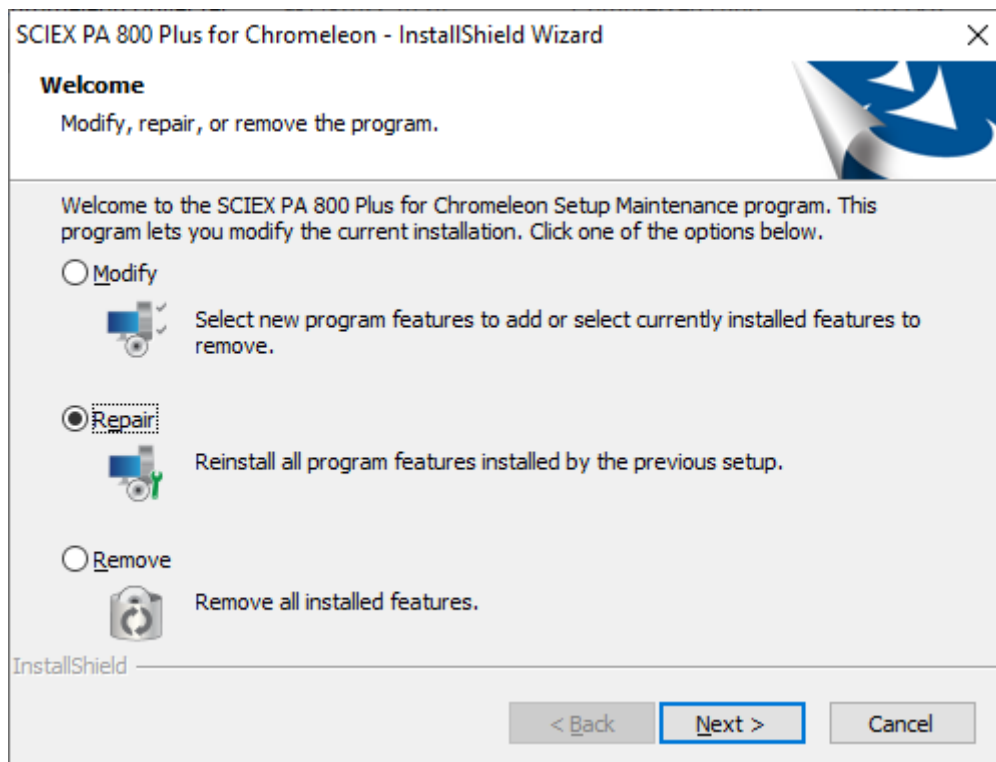


Figure 1: Maintenance mode

3. Click **Repair** to run a repair installation.
4. Follow the on-screen instructions to repair the installation..

3.3.2 System Status Report

If an installation problem cannot be resolved using the above-described steps, use the System Status Report (SSR) application to create an error report. The report collects detailed information about the PA 800 Plus Driver installation. This information is required by the Thermo Fisher Scientific Support team to provide a solution to your installation problem.

TO CREATE A SYSTEM STATUS REPORT

1. Access the System Status Report application via:

Start > Thermo Chromeleon 7 > System Status Report.

Note: The person creating a System Status Report must be logged on as a Windows user with local administrator privileges.

2. Specify a destination folder for the SSR. By default, the report is saved on the computer desktop.

3. Select the information that you want to include in the report.

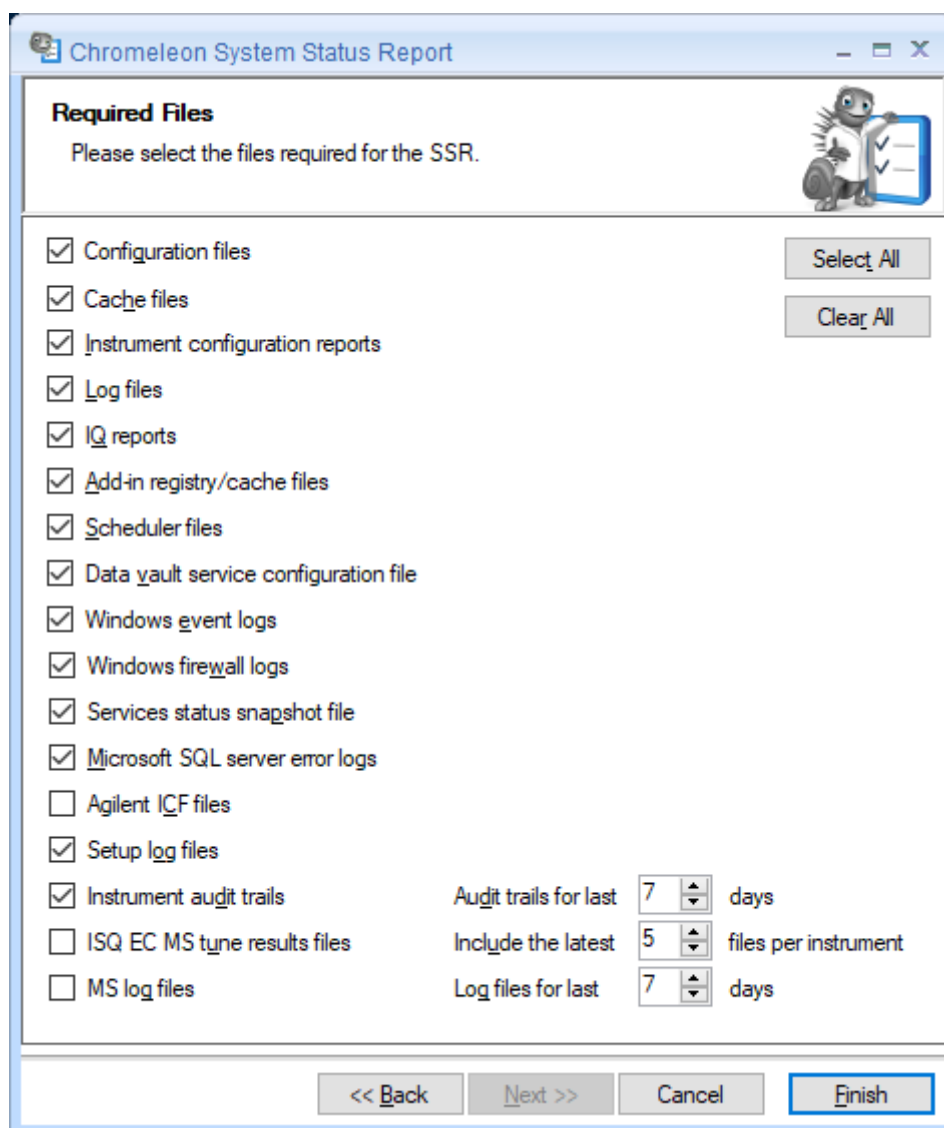


Figure 2: Preferred Options for SSR generation

4. Click **Finish**. The System Status Report Tool creates a folder on the desktop containing the report data as a compressed archive.

5. Save the finished report and email it to the Thermo Fisher Scientific Support team.

4 Uninstalling PA 800 Plus Driver

You can remove the PA 800 Plus Driver program files from your computer by following the instructions below.

Tip: These steps only remove the software components. All your data and settings will be preserved. This has the advantage that you can safely uninstall the software without affecting your data.

1. Insert the PA 800 Plus Driver installation medium into the PC. Click **Run Setup.exe**. This starts the PA 800 Plus Driver setup in **Maintenance mode** (see Figure 1: Maintenance mode).

-OR-

1. Alternatively, click **Start > Settings > Apps and features**. Select the current PA 800 Plus Driver program.
2. Select **Remove** in Maintenance Mode or **Uninstall** in Windows settings.
3. Follow the onscreen instructions to remove the program from the computer.

-OR-

1. Open a Command-prompt.
2. Go to the directory where the setup.exe is located
3. Enter `setup.exe -s -f1"<PATH>\uninstall.iss"`

5 Index

Configure Windows	12
Disable USB Power Management.....	12
Document Conventions.....	4
Documentation	
Overview	4
Installing PA 800 Plus Driver	14
Prerequisites.....	14
Requirements	
Third-Party Software	6
Supported Chromatography Instruments & Modules	5
Supported Operating Systems.....	5
System Requirements/Compatibility	5
Third-Party Software	
Requirements	6
To install SCIEX PA 800 Plus.....	14
Troubleshooting	
Software Installation	15

www.thermofisher.com

Thermo Fisher Scientific Inc.
168 Third Avenue
Waltham, MA 02451
USA

thermoscientific