



Specifications	Catalog Number	FBG5005GA
	Model Number	FBG5005GA

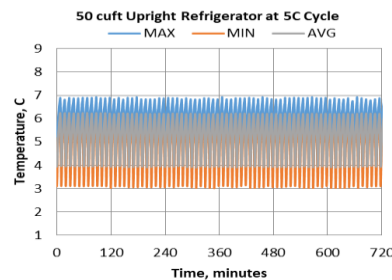
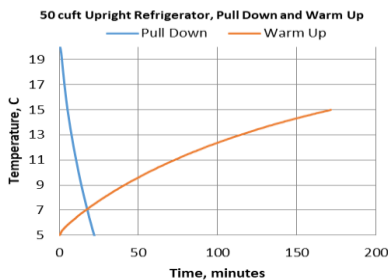
Application, Rating and Electrical Data	
Application	Storage of General (non-flammable) Laboratory Materials
Storage Volume	1415 Liters / 50 Cubic Feet
Factory Set Point	5°C
Set Point Range / Adjustable Increment	4°C to 7°C / 0.1°C
Electrical Power / Rated Current	115V 60Hz 1 Phase / 3.7 A
Building Supply Rating	15A dedicated grounded non-GFCI circuit. Protected by circuit breaker rated for inductive loads
Power Plug / Power Cord Length	15 Amp (NEMA 5-15P) / 3.048 Meters (10 feet)
Agency Listings	UL, cUL
Indoor / Outdoor Usage	Indoor Use Only
Application Environment	Non-Corrosive, Non-Flammable, Non-Explosive, Good Air Ventilation
Ambient Operating Temperature	15° C - 32° C (60° F - 90° F)

Refrigeration Configuration	
Refrigeration System	Vapor compression system
Compressor / Number / Capacity	Hermetic Single Speed Compressor / 1 / 222W
Condenser Type / Number	Enhanced Finned-Tube and Forced-Air Cooled / 1
Expansion Device	Capillary Tube
Evaporator Type / Defrost Method	Forced Air Evaporator Coil / Automatic Defrost
Refrigerant Charge / Flammability	R290, 145gms, GWP:3 ODP:0 / Flammable

Controller / Electrical System Configuration and Features	
Controller Level	Eye Level
Power Switch	Circuit breaker at rear
Controller Type	Digital Controller - 3 digits, decimal point and multi-function icons
Setpoint Security / Programmable	No / No
Compressor Safe Guard	Current protection
Control Sensor	Single NTC (10K ohm)
Connectivity / Remote Outputs	Remote alarm contacts
Adjustable Warm / Cold Alarms	Fully Adjustable
Power Failure Alarm	Standard
Electronic Chart Recorder	No

Dimensions and Construction	
Interior Dimensions (D x W x H)	72.4 cm x 133.4 cm x 147.3 cm (28.5" x 52.5" x 58.0")
Exterior Dimensions (D x W x H)	96.0 cm x 143.5 cm x 199.4 cm (37.8" x 56.5" x 78.5")
Insulation	5.08 cm (2.0") High-Density Water-Blown Polyurethane Foam
Door Perimeter heater	Yes
Shelves / Load Limit	(8) Adjustable Wire Shelves in 1" Increments / 45 kg (100 lbs) per Shelf
All-Direction Casters	Standard with Locks
Shipping Weight	286 kg / 630 lbs

Typical Performance Characteristics in 20°C Ambient



Test Unit Series Number or MSO Number:	20442-B-21
Cabinet Load:	Unloaded
Average Cabinet Temp at 5C Cycle (C):	5.3
Peak Variation from Setpoint (C):	+1.9 / -2.0
Average Uniformity (C):	1.2
Average Stability (C):	2.4
1-min Door Opening Recovery to 5C (min):	4
Duty Cycle at 5C (%):	23
Cycle (on/off) rate at 5C (min):	2 / 8
Energy Consumption (kw-hr/day):	2.22
Heat Rejection Rate (btu/hr):	315.4
Pull Down Time (to 5C) (min):	23
Warm Up Time (5C to 15C) (min):	171
Sound (dBA):	47.8

1) Data is representative of performance and not published product specifications. Technical data sheet test results should not be referenced in developing any regulatory parameters for specific customer usage.  
 2) Performance will vary based on customer product volume, storage format, operating conditions, test methodology and performing recommended maintenance  
 3) Continuous product enhancements may, without notice, result in amendments or omissions to this technical data sheet. Thermo Scientific cannot accept responsibility for damage, injury, loss or expenses resulting from misapplication of the information herein.

Distributed by Fisher Scientific. Contact us today:

**In the United States:**

Order online: fishersci.com  
 Call customer service: 1-800-766-7000

**In Canada:**

Order online: fishersci.ca  
 Call customer service: 1-800-234-7437





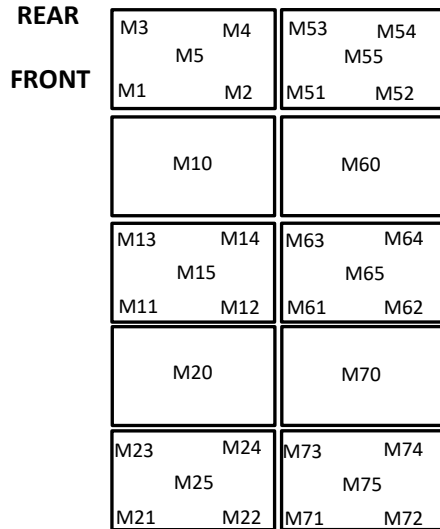
part of Thermo Fisher Scientific

**Typical Cabinet Temperature Map**

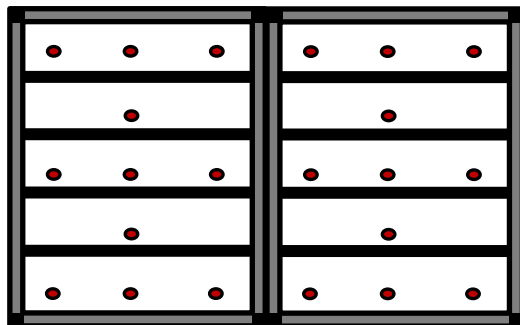
Refrigerator 50cuft , 4 Inner-Shelves + Base, 2 Outer Doors

Temperatures are averages during > 20 cycles after reaching a setpoint of 5C

**Top View of Shelves**



Front View



20442-B-21-3

**Cabinet Average:** 5.3 C  
**Probe Average:** 5.5 C  
**Peak Variation:** +1.9 C / -2.0 C

	M1	M2	M3	M4	M5	M10
Avg	6.1	5.5	5.3	5.1	5.7	5.3
Max	6.9	6.5	6.4	6.3	6.5	6.3
Min	5.2	4.3	4.1	3.7	4.6	4.2

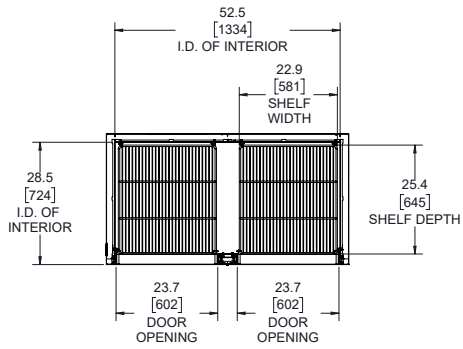
	M11	M12	M13	M14	M15	M20
Avg	5.5	5.2	5.1	5.1	5.2	5.1
Max	6.5	6.4	6.3	6.2	6.3	6.3
Min	4.3	3.8	3.4	3.5	3.9	3.5

	M21	M22	M23	M24	M25
Avg	5.2	5.2	5.3	5.1	4.9
Max	6.4	6.4	6.3	6.1	6.2
Min	3.7	3.6	3.9	3.8	3

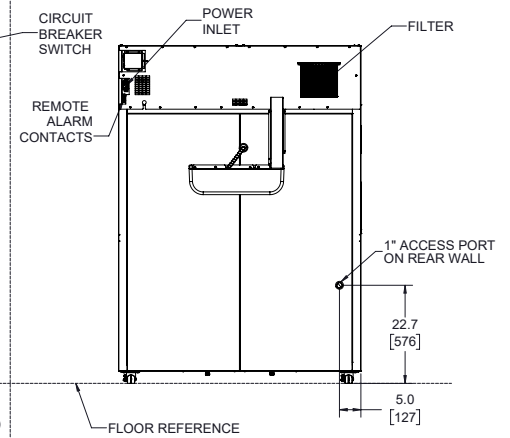
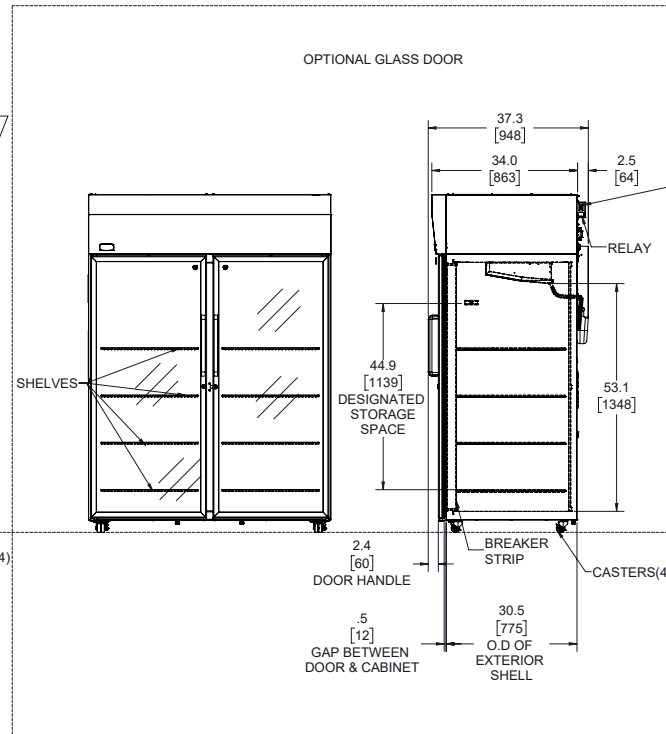
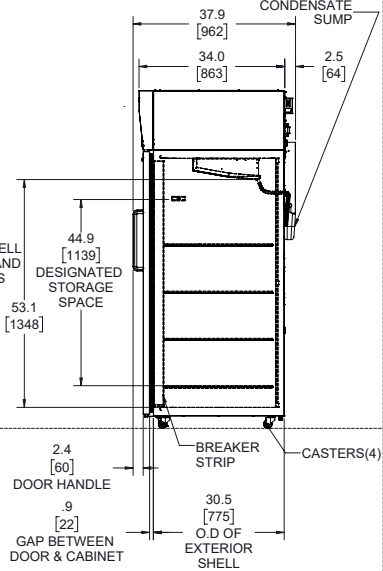
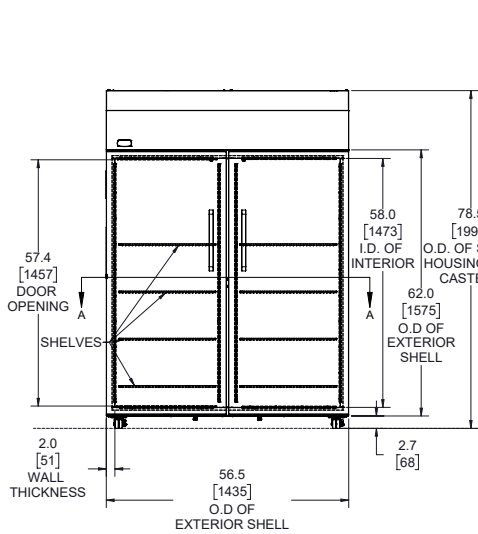
	M51	M52	M53	M54	M55	M60
Avg	5.2	5.5	5	5	5.3	5.1
Max	6.2	6.5	6.1	6.1	6.2	6.1
Min	4	4.5	3.8	3.6	4.2	4

	M61	M62	M63	M64	M65	M70
Avg	5.2	5.5	4.9	5	5.2	5.1
Max	6.2	6.3	6.1	6.2	6.1	6.1
Min	3.9	4.6	3.1	3.5	4.2	3.9

	M71	M72	M73	M74	M75
Avg	5.2	5	5.1	5.2	4.8
Max	6.3	6.2	6.2	6.2	6.1
Min	3.8	3.4	3.7	3.8	3.1



ONLY CABINET SHOWN FOR CLARITY IN TOP VIEW, TO ILLUSTRATE INTERIOR DIMENSIONS



NOTE: DUAL DIMENSION IS INCHES OVER MILLIMETERS  
DO NOT USE FOR ENGINEERING PURPOSES. SUBJECT TO CHANGE WITHOUT NOTICE.

50 cu.ft. Lab Refrigerator  
8 Shelves  
Double Outer Door  
Top Mount Controls

333650G08\_rA