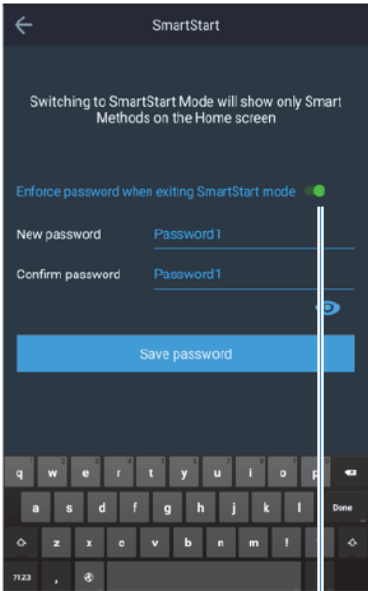
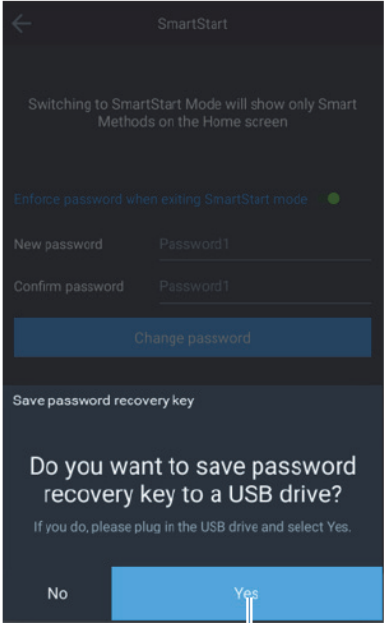


# Setting Password

Enter the SmartStart menu through the instrument Settings page.



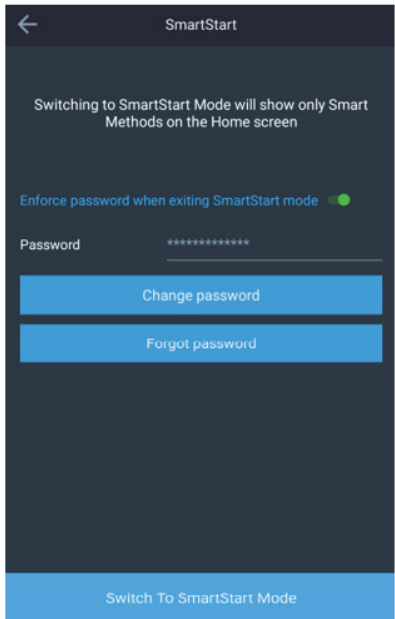
Enable password, enter new password, and confirm it.



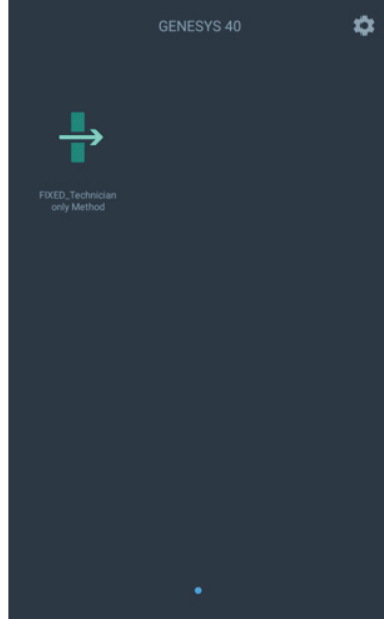
Generate a recovery key onto a USB drive. This key is required to reset the password.



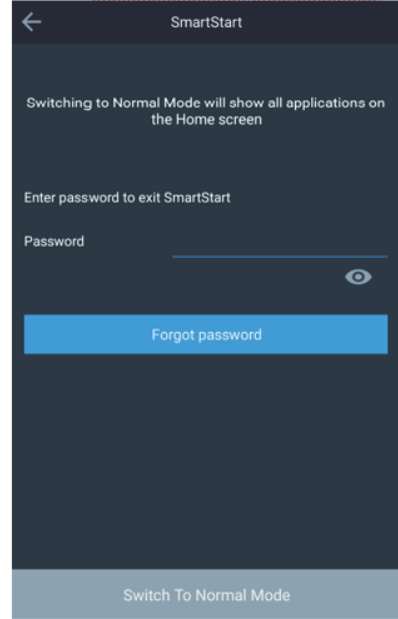
Generate a recovery key onto a USB drive. This key is required during the password reset process and therefore should be kept safely by the administrator.



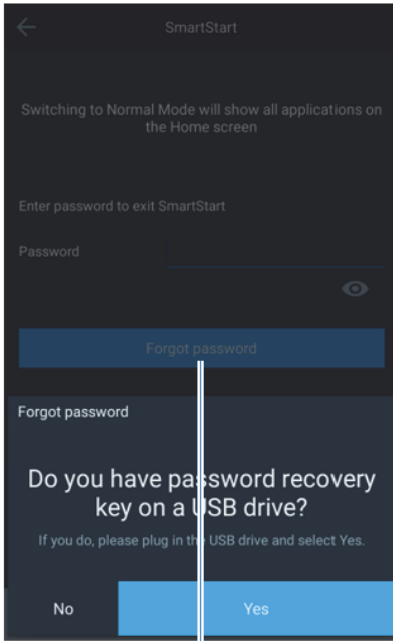
The password is now set and you may switch to SmartStart



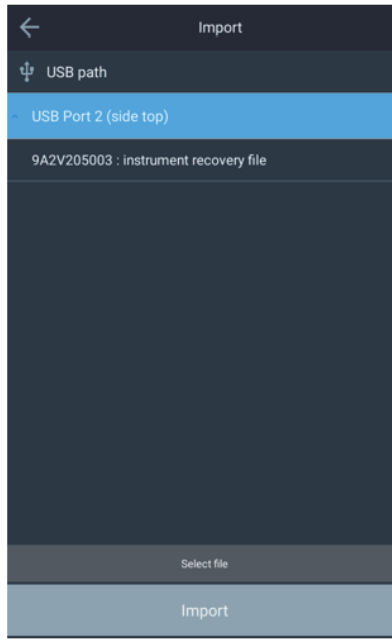
You may exit SmartStart through Settings > SmartStart



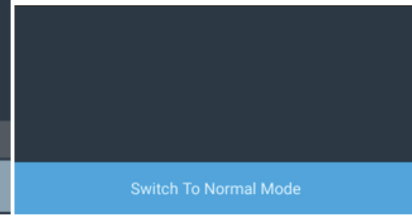
You will now be prompted to enter a password to enter the Normal mode.



to reset the instrument after a forgotten password.



The password recovery file generated during the password set process above is required to reset the instrument. Insert the USB drive with the recovery file in the root folder.

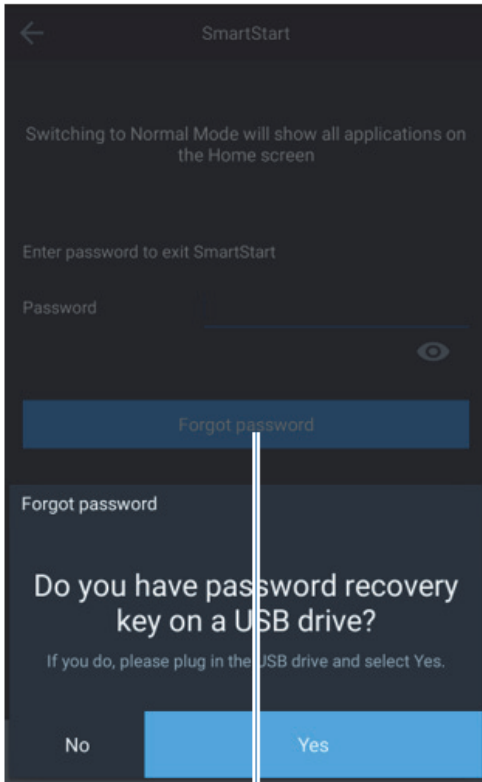


The instrument can now be switched to Normal Mode.

## Lost Recovery File

If a recovery file is lost, the instrument reset process involves sending an instrument generated file to the GENESYS Technical support team. To request a master password reset process, visit the website below and complete the technical support form and attach the file generated by the instrument following the instructions below.

<https://tfs-3.secure.force.com/madisonsupport/>



to reset the instrument after a forgotten password.

If you have misplaced the recovery file, tap NO when prompted for the file.

The instrument will generate a new password recovery file. This file is required by the technical support team to unlock the instrument.

To begin the master instrument password reset process, first fill in the web form at the address above and then attached the newly generated file to the form.

After the verifying credentials, the technical support team will deliver a password reset file. Save this file into the root folder of a USB drive and follow the [Forgot Password](#) process.

