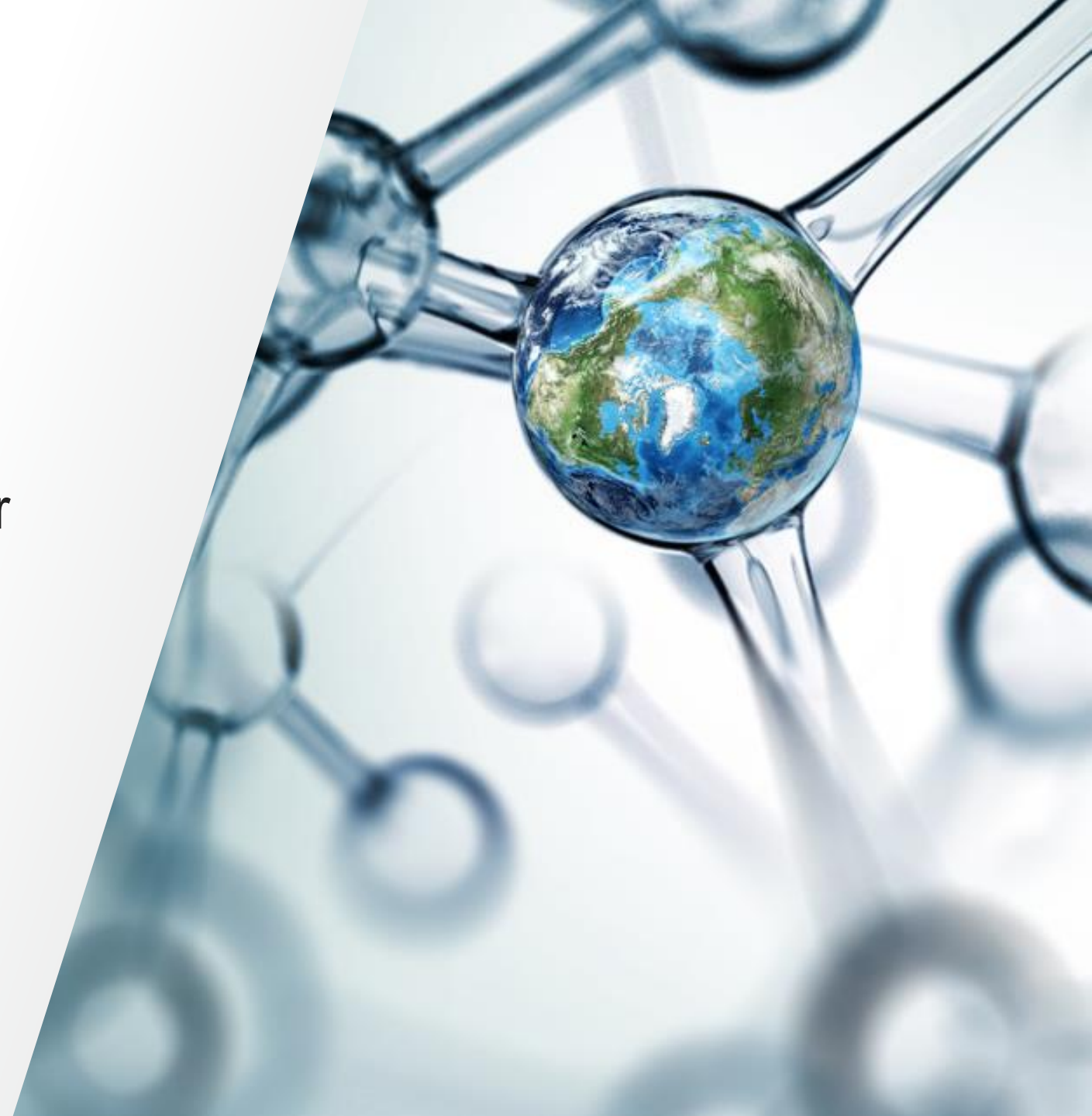


DT00358 Beam Width Illuminator Tool Use Document

 The world leader in serving science



Revisions

Revision	Change Description	Changed By/Date
A	New Release	MK 04/03/24

Removing Packing Protection

- | | |
|----------|--|
| 1 | Remove pink foam covering the LED. |
| 2 | Recommended to return this to protect the LED when not using the tool. |



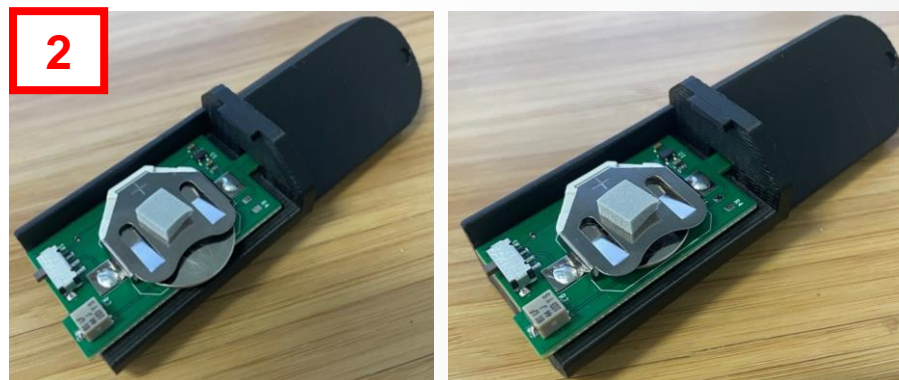
Accessing Board

- | | |
|---|---|
| 1 | Remove set screw from the housing. |
| 2 | Gently remove the cover of the housing. |



Insert Batteries into Board

- | | |
|----------|---|
| 1 | Locate positive and negative sides of the coin batteries. |
| 2 | Slide in the first battery with the positive side up in the battery holder on the board. |
| 3 | Carefully slide in the second battery on top of the first battery in the same orientation (positive side up). |
| 4 | Make sure they are positioned in the battery holder correctly. |



3-4

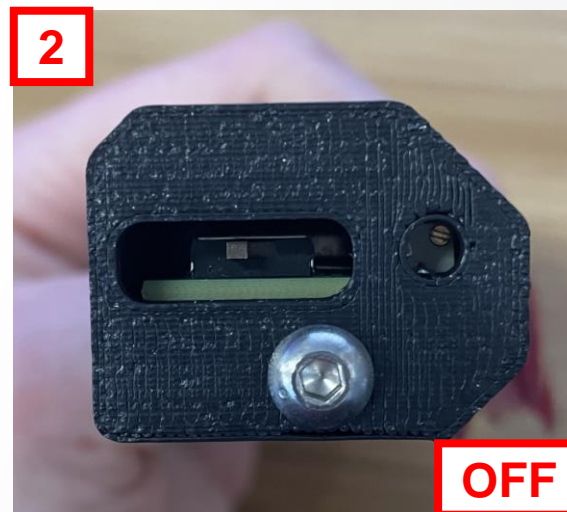
Place Board into Housing

- | | |
|----------|---|
| 1 | Place cover back onto the board. |
| 2 | Tighten set screw to secure board within the housing. |



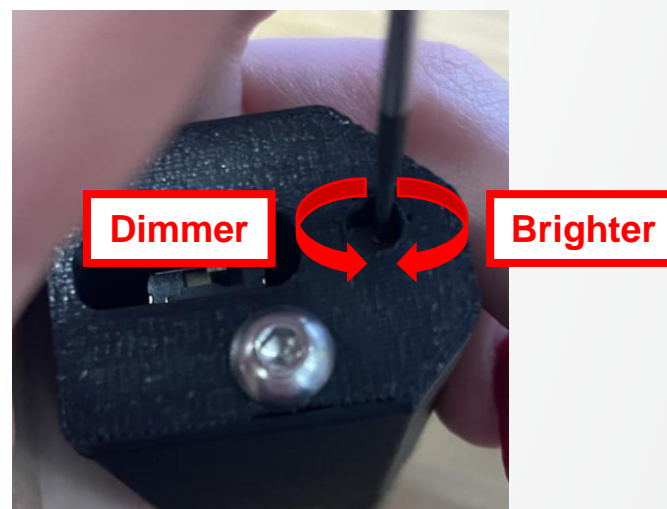
Power On the Board

- | | |
|----------|--|
| 1 | Use the micro screwdriver to move switch to turn board ON/OFF. |
| 2 | Ensure board is turned OFF when not in use to save battery life. |



Adjust Board Brightness

- 1 Use the same micro screwdriver to twist the potentiometer to adjust brightness of LED.



Remove Batteries from Board

- | | |
|----------|--|
| 1 | Open casing following same instructions as <i>Accessing Board</i> . |
| 2 | Gently slide the board out of the casing. |
| 3 | Use the same micro screwdriver to gently push out the batteries one at a time from the back. |
| 4 | Properly discard dead batteries. |

