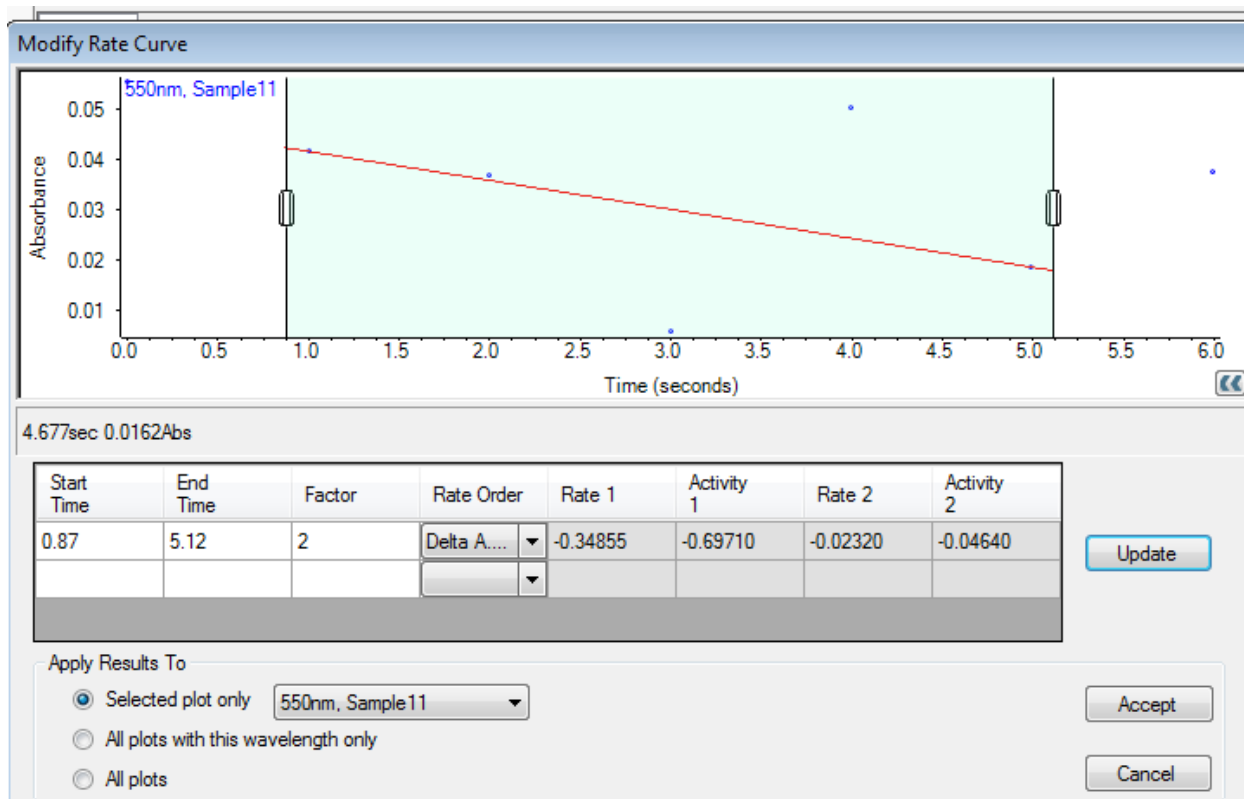


The first screen capture starts with what things look like right after the scan completes.

Under the Analyze Tab, is the Modify Rate Curve which shows the scan results and settings of the method.



When you select the Update button on the right side of the screen, calculations are done and displayed.

This is displayed as Rate 1 Activity 1, and Rate 2 Activity 2.

The below table defines the Rate and Delta AU.

Name in Insight	Name in Robson	Meaning
Rate 1	Rate	Slope of the peak height vs. time plot
Rate 2	Delta AU	Difference between the peak height at the last time in the interval and the peak height at the first time in the interval

Activity 1 and Activity 2 are simply the product of the Factor in the results table, multiplied by the value of Rate 1 and Rate 2 respectively.