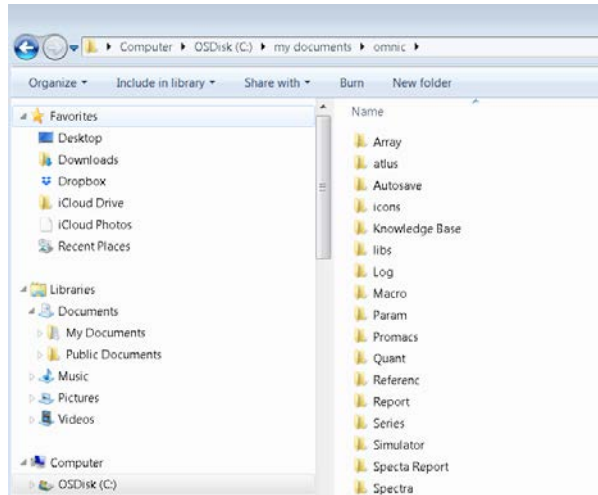
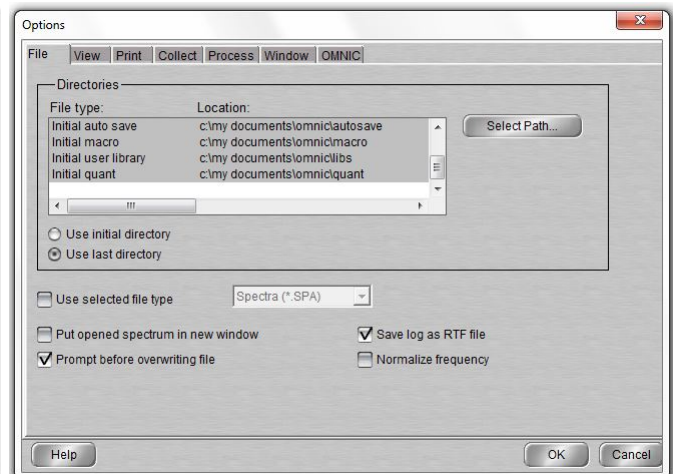
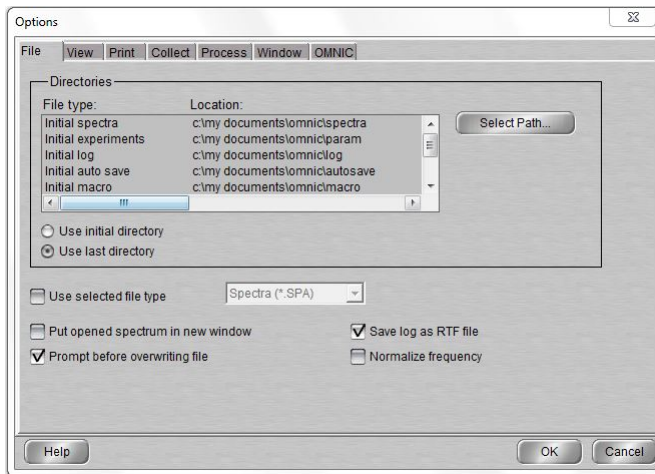


## Changing the OMNIC Directories

By default, the OMNIC directories are installed to the local operating disk drive (i.e. C: \ my documents \ omnic).

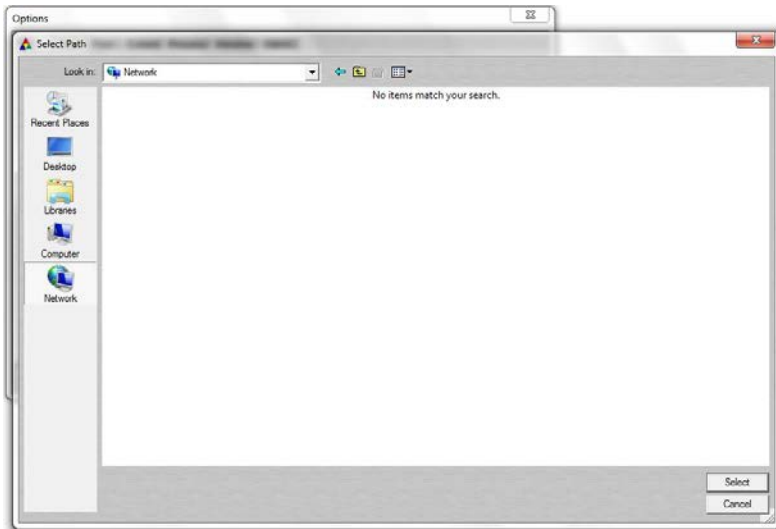


The default OMNIC directory locations can easily be changed within the OMNIC software. Copy the contents of the omnic folder to the desired Network location. Then, open OMNIC. Under the Edit menu select Options..., which will open a new Options window. For each File type listed in the Directories a path must be selected. The default path is the local disk drive.



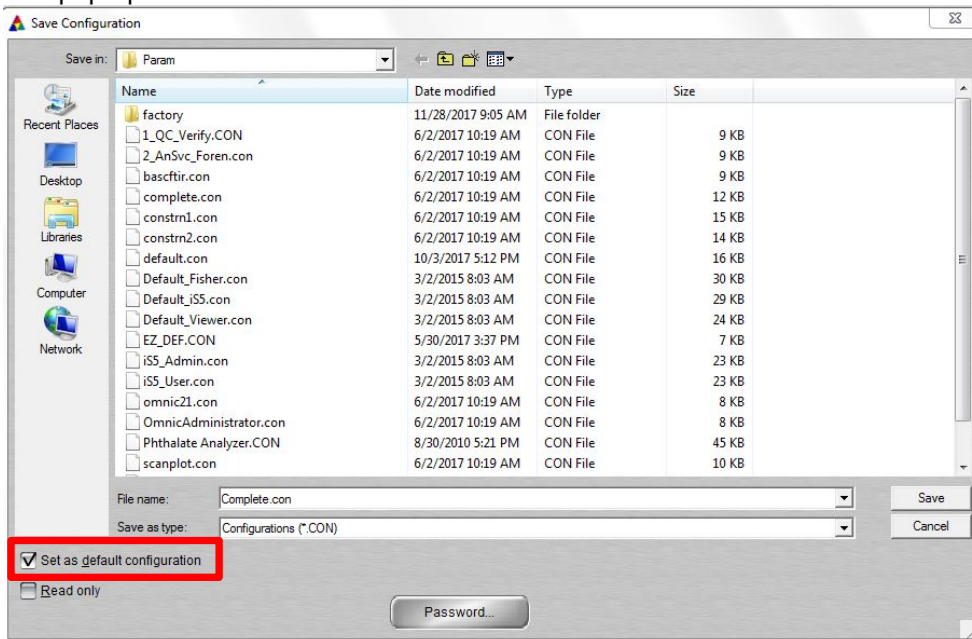
Highlight each File type (i.e. Initial spectra, etc) and then click on the Select Path button.

Once again, a new window pops up. Now, redirect the Location from the local disk drive to the desired Network location:



Once each Location associated with a File Type in the Directories has been updated, the OMNIC configuration must be saved. This will ensure the changes made to the locations of the different file types (i.e. from local disk drive to backed-up network location) will be saved and used moving forward.

To save the OMNIC configuration, click on the File menu and then Save Configuration As..., which will open a new pop-up window.



Please rename the configuration file rather than over-riding the default configuration file (default.con). You could use something simple like default\_iS10.con. Please make sure the “Set as default configuration” is selected so each time OMNIC is used, the changes made to the directories are being used.